

INDUSTRIAL FOR SUBLEASE



# 45-53 FIELDING AVENUE

53 FIELDING AVENUE, BURNSIDE, NS B3B 1E3



FOR SUBLEASE

**KW COMMERCIAL ADVISORS**

1160 Bedford Highway, Suite 100  
Bedford, NS B4A 1C1



Each Office Independently Owned and Operated

*PRESENTED BY:*

**PHIL BOLHUIS**

Commercial Real Estate Advisor  
O: (902) 407-2854  
C: (902) 293-4524  
philbolhuis@kwcommercial.com

**MATT OLSEN**

Commercial Real Estate Advisor  
O: (902) 407-2492  
C: (902) 489-7187  
mattolsen@kwcommercial.com  
Nova Scotia

We obtained the information above from sources we believe to be reliable. However, we have not verified its accuracy and make no guarantee, warranty or representation about it. It is submitted subject to the possibility of errors, omissions, change of price, rental or other conditions, prior sale, lease or financing, or withdrawal without notice. We include projections, opinions, assumptions or estimates for example only, and they may not represent current or future performance of the property. You and your tax and legal advisors should conduct your own investigation of the property and transaction.

# EXECUTIVE SUMMARY

53 FIELDING AVENUE



## OFFERING SUMMARY

<b>PROPERTY TYPE:</b>	Industrial
<b>AVAILABLE SPACE:</b>	9,404 SF (Units 8-10)
<b>DIMENSIONS:</b>	58' X 158' Unit dimensions
<b>CLEAR HEIGHT:</b>	20' - 24'
<b>COLUMN SPACING:</b>	40' X 25'
<b>DOCK DOORS:</b>	Four (4) dock loading (2 at rear)
<b>GRADE DOORS:</b>	One (1) Grade loading
<b>HEATING &amp; COOLING:</b>	Natural gas forced air heaters
<b>POWER:</b>	600 Volt 30 Amp 3 Phase Power
<b>YARD:</b>	Maneuvering area for 53' tractor trailer
<b>SUBLEASE RATE:</b>	\$14.16 Net + 3% escalations
<b>CAM &amp; TAX:</b>	\$8.18
<b>SUBLEASE EXPIRY:</b>	February 27, 2029

## PROPERTY OVERVIEW

Discover the ideal industrial space at 53 Fielding Avenue, available for sublease until February 27, 2029. This property offers 9,404 SF with high 20'-24' clear ceilings, accommodating efficient operations with four dock doors (two at the rear) and one grade-level loading area. The unit dimensions are 58' x 158' with spacious 40' x 25' column spacing. Facilities include two washrooms and can hold up to 900 pallet positions (racking negotiable). Designed for logistics, it features ample room for 53' tractor-trailer maneuvering, natural gas forced air heaters, and robust 600 Volt 30 Amp 3-phase power.

## LOCATION OVERVIEW

Experience the strategic benefits of 53 Fielding Avenue in Dartmouth's Burnside Business Park. This commercial property provides unmatched access to key highways, linking directly to Halifax, the airport, and port facilities. With over 1,500 businesses in the vicinity, this location in one of Atlantic Canada's largest business parks is ideal for companies looking for connectivity, visibility, and a thriving business environment.

**KW COMMERCIAL ADVISORS**  
1160 Bedford Highway, Suite 100  
Bedford, NS B4A 1C1

**kw** COMMERCIAL  
ADVISORS  
Each Office Independently Owned and Operated

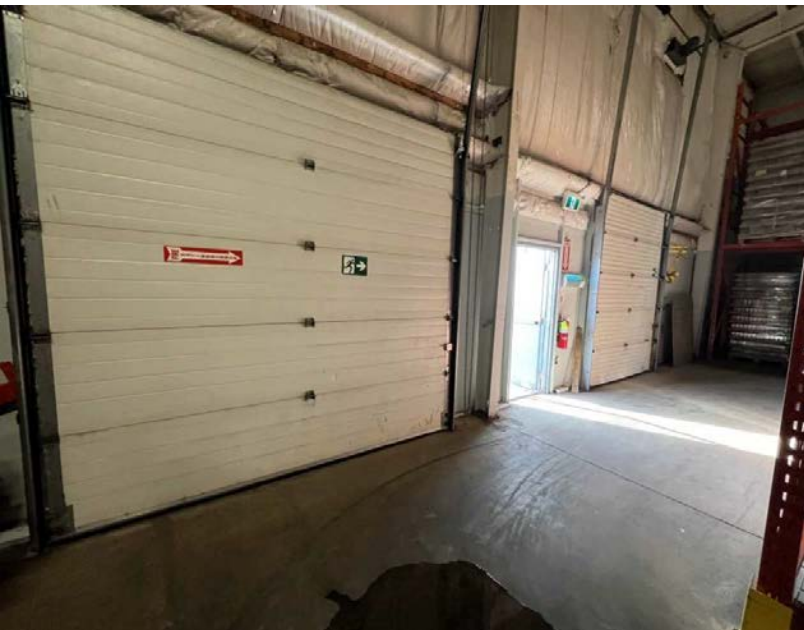
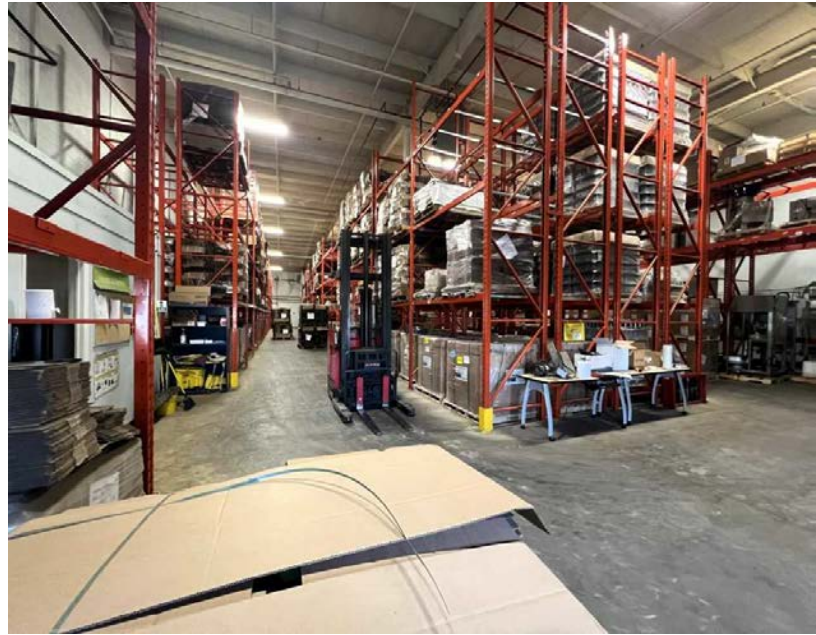
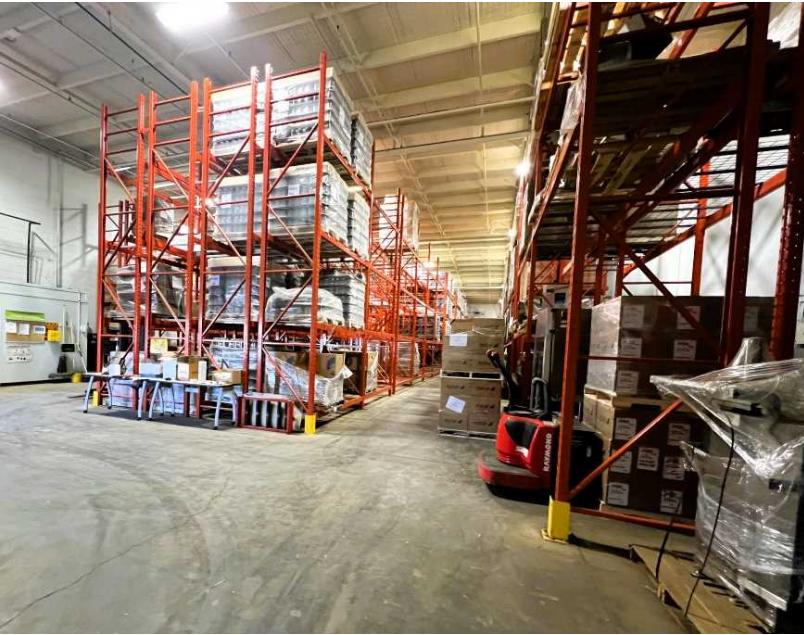
**PHIL BOLHUIS**  
Commercial Real Estate Advisor  
O: (902) 407-2854  
C: (902) 293-4524  
philbolhuis@kwcommercial.com

**MATT OLSEN**  
Commercial Real Estate Advisor  
O: (902) 407-2492  
C: (902) 489-7187  
mattolsen@kwcommercial.com  
Nova Scotia



# PROPERTY PHOTOS

53 FIELDING AVENUE





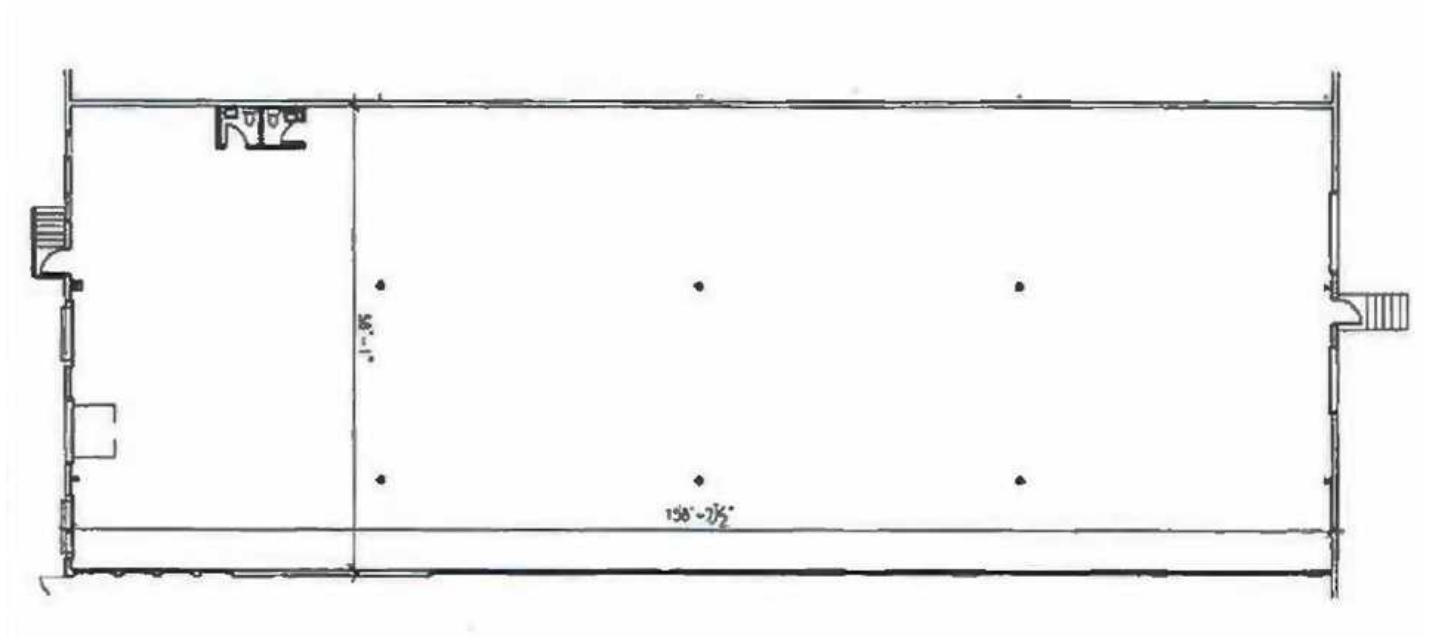
# PROPERTY PHOTOS

53 FIELDING AVENUE

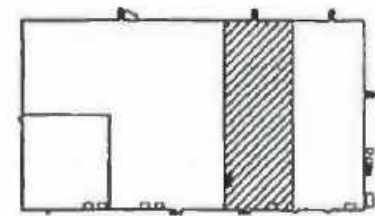
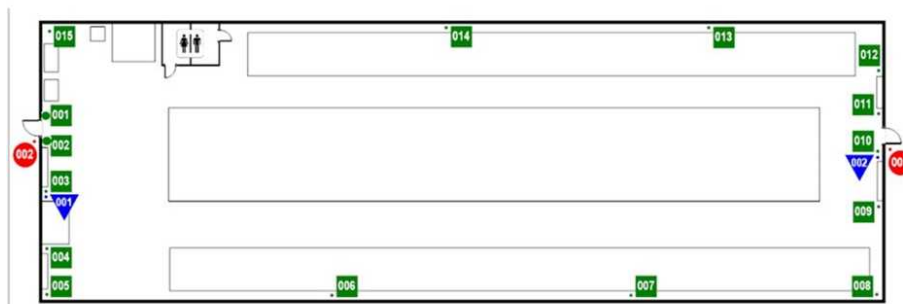


# FLOOR PLAN

53 FIELDING AVENUE



Floor Plan



Racking Positions

Building Layout

**KW COMMERCIAL ADVISORS**  
1160 Bedford Highway, Suite 100  
Bedford, NS B4A 1C1

**kw** COMMERCIAL  
ADVISORS  
Each Office Independently Owned and Operated

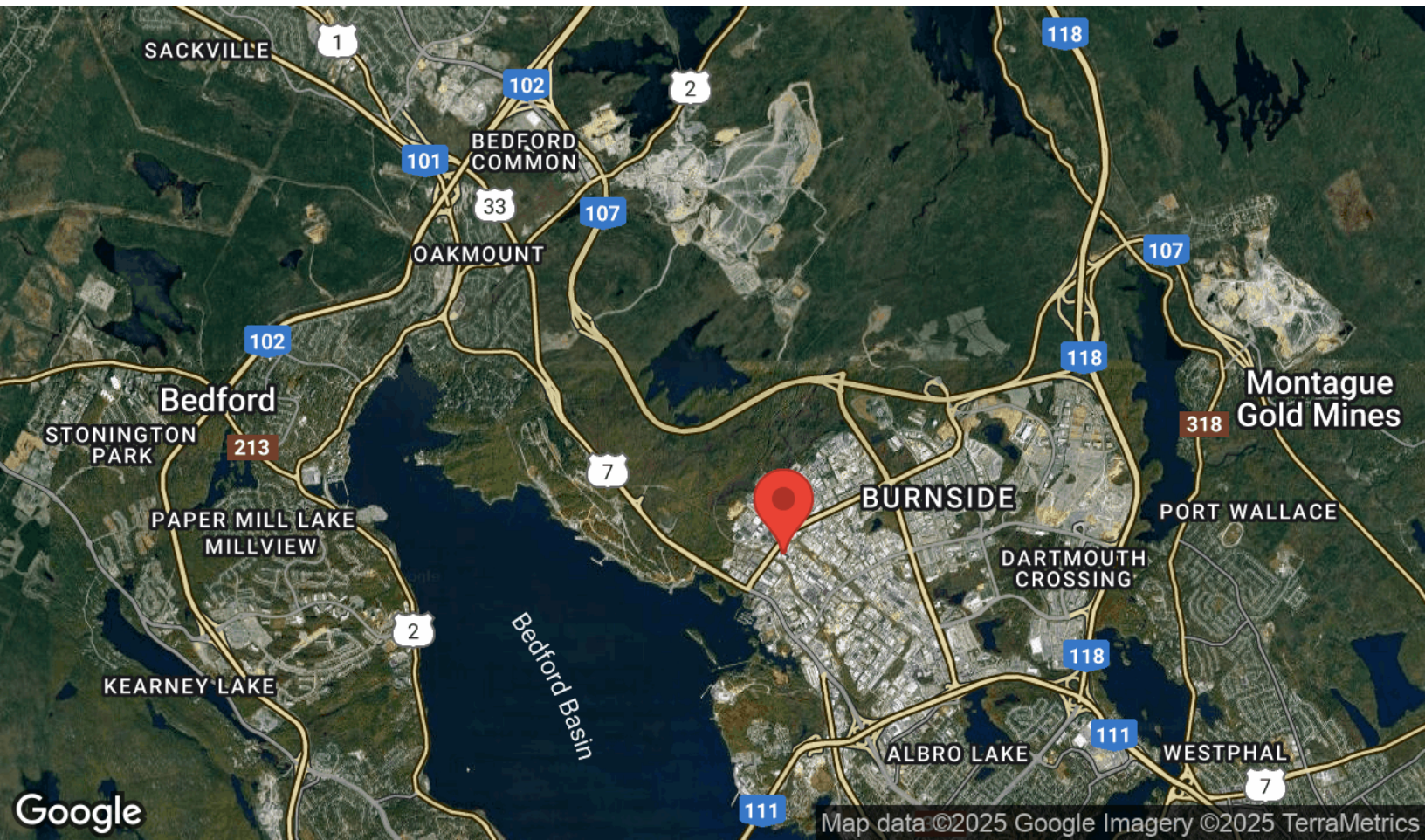
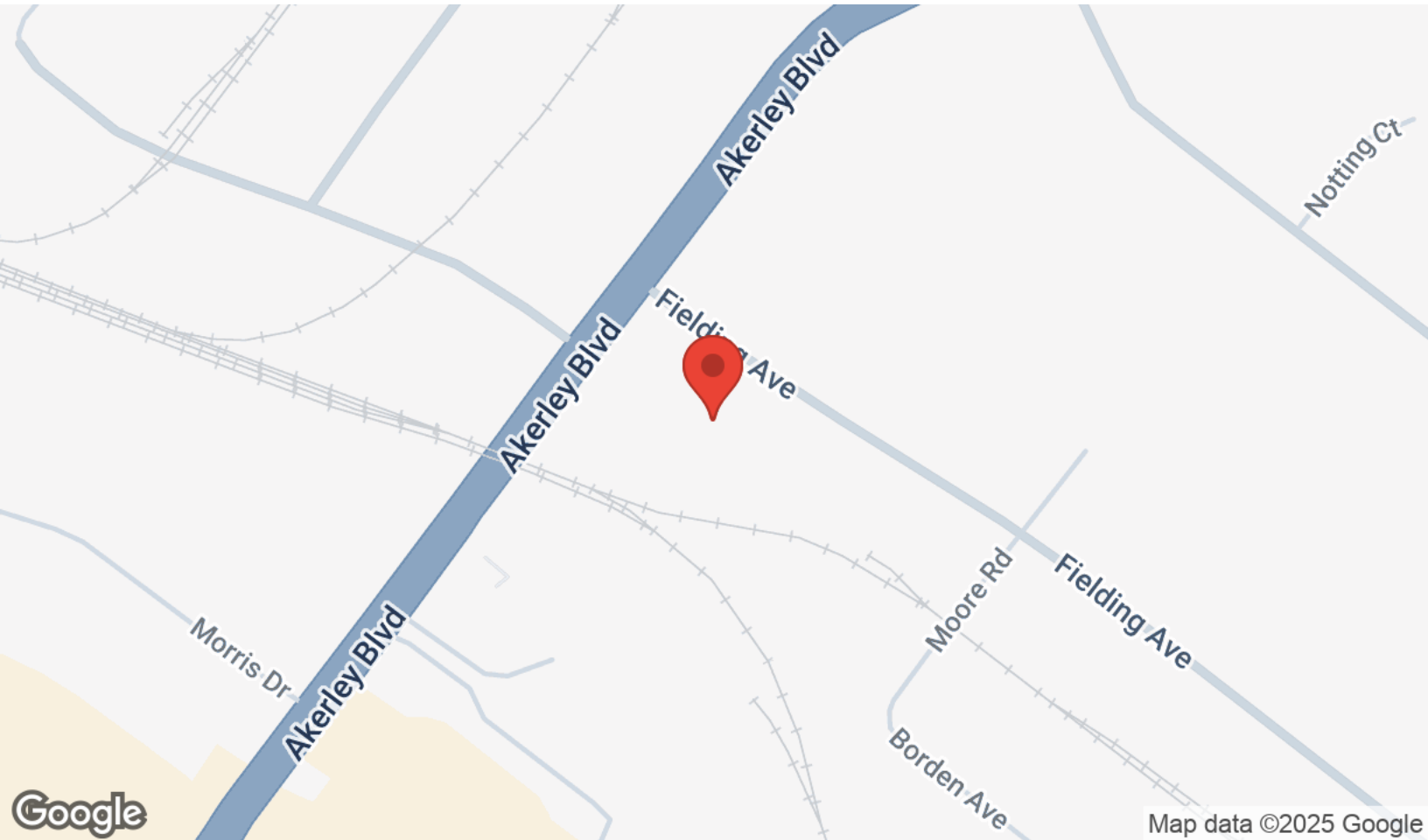
**PHIL BOLHUIS**  
Commercial Real Estate Advisor  
O: (902) 407-2854  
C: (902) 293-4524  
philbolhuis@kwcommercial.com

**MATT OLSEN**  
Commercial Real Estate Advisor  
O: (902) 407-2492  
C: (902) 489-7187  
mattolsen@kwcommercial.com  
Nova Scotia



# LOCATION MAPS

53 FIELDING AVENUE





# LOCATION & HIGHLIGHTS

53 FIELDING AVENUE



Nestled at 53 Fielding Avenue within the vibrant Burnside Business Park in Dartmouth, Nova Scotia, this commercial property is perfectly positioned for business success. Burnside is one of the largest business parks in Atlantic Canada, offering businesses a strategic urban location with superior access to transportation networks. Key highways like 111, 102, 118, and 107 are just minutes away, ensuring seamless connectivity to downtown Halifax, Halifax International Airport, and the Port of Halifax.

This property on Fielding Avenue is conveniently close to Akerley Boulevard and Wright Avenue, major arteries within the park, which facilitate easy access for employees, clients, and logistics. The area is a dynamic business community, hosting over 1,500 companies and providing employment to more than 15,000 people. The park's infrastructure supports a mix of industrial and office spaces, with additional benefits like rail access via C.N.R mainline and common user facilities.

Situated in the heart of this commercial hub, 53 Fielding Avenue not only offers logistics advantages but also proximity to local amenities such as Dartmouth Crossing, making it an attractive choice for businesses seeking efficiency, visibility, and a well-connected location.

**KW COMMERCIAL ADVISORS**  
1160 Bedford Highway, Suite 100  
Bedford, NS B4A 1C1



Each Office Independently Owned and Operated

**PHIL BOLHUIS**  
Commercial Real Estate Advisor  
O: (902) 407-2854  
C: (902) 293-4524  
philbolhuis@kwcommercial.com

**MATT OLSEN**  
Commercial Real Estate Advisor  
O: (902) 407-2492  
C: (902) 489-7187  
mattolsen@kwcommercial.com  
Nova Scotia

# BUSINESS MAP

53 FIELDING AVENUE



Callout box containing logos for a postal service, a business named 'WORKS ALTERNATIVE', and a food item.

360ft

**SOURCE** Cleve's Source For Sports

**Tim Hortons** Tim Hortons

**NEW LEAF** New Leaf Café and Catering

Callout box containing logos for 'PRINCESS AUTO' and another business.

Mall One

**CHANDLER** Chandler

**Habitat for Humanity** Habitat ReStore Dartmouth

**Smokey's Restaurant**

Callout box containing logos for 'MEXICAN RESTAURANT' and another business.

Callout box containing logos for 'Pita Pit', 'Starbucks', and another business.

**ATLANTIC SCREEN PRINTING** Atlantic Screen Printing

**Payzant Home Building Centre - Dartmouth**

Callout box containing logos for 'enterprise', 'Tim Hortons', 'IRVING', 'McDonald's', and another business.



# CONTACT INFORMATION

53 FIELDING AVENUE



**MATT OLSEN**  
COMMERCIAL REAL ESTATE ADVISOR  
KW COMMERCIAL ADVISORS

902-489-7187 | [MATTOLSEN@KWCOMMERCIAL.COM](mailto:MATTOLSEN@KWCOMMERCIAL.COM)



**PHIL BOLHUIS**  
COMMERCIAL REAL ESTATE ADVISOR  
KW COMMERCIAL ADVISORS

902-293-4524 | [PHILBOLHUIS@KWCOMMERCIAL.COM](mailto:PHILBOLHUIS@KWCOMMERCIAL.COM)

**KW COMMERCIAL ADVISORS**  
1160 Bedford Highway, Suite 100  
Bedford, NS B4A 1C1



Each Office Independently Owned and Operated

**PHIL BOLHUIS**  
Commercial Real Estate Advisor  
O: (902) 407-2854  
C: (902) 293-4524  
[philbolhuis@kwcommercial.com](mailto:philbolhuis@kwcommercial.com)

**MATT OLSEN**  
Commercial Real Estate Advisor  
O: (902) 407-2492  
C: (902) 489-7187  
[mattolsen@kwcommercial.com](mailto:mattolsen@kwcommercial.com)  
Nova Scotia