



1160 Bedford Highway, Suite 100  
Bedford, NS B4A 1C1

## MONTHLY LISTINGS REPORT

Halifax & Surrounding Region

SEPTEMBER 2024

## CLICK TO VIEW

**FOR LEASE**

[OFFICE](#)

[RETAIL](#)

[MIXED-USE](#)

[INDUSTRIAL](#)

**FOR SALE**

[OFFICE](#)

[MIXED-USE](#)

[MULTI-FAMILY](#)

[INDUSTRIAL](#)

[LAND](#)

**Specialists in the Halifax Commercial Real Estate Market**

**TOM GERARD, CCIM, SIOR**

902-407-2489 Office  
902-830-1318 Mobile  
tomgerard@kwcommercial.com

**ALLY CONNORS, BBA**

902-407-0001 Office  
902-717-4824 Mobile  
allythibodeau@kwcommercial.com

**PHIL BOLHUIS, BCOMM**

902-407-2854 Office  
902-293-4524 Mobile  
philbolhuis@kwcommercial.com

**AYOB ASSALI**

902-456-2686 Mobile  
a.assali@kwcommercial.com

**MATT OLSEN, BCD**

902-407-2492 Office  
902-489-7187 Mobile  
mattolsen@kwcommercial.com

**PAUL PETTIPAS, LLB, MiCP**

902-497-9636 Mobile  
paul.pettipas@kw.com

**JOHNNY YANG, BCOMM**

902-407-2696 Office  
902-452-9073 Mobile  
johnnyyang@kwcommercial.com





# LEASE LISTINGS

## OFFICE



### 1000 WINDMILL ROAD

**DARTMOUTH | BURNSIDE BUSINESS PARK**

Flex office space with various suite sizes including air-conditioning available. Ample parking. Flexible lease terms. Utilities included. Available January 2024.

**Available Space | Up to 17,885 sf**

**Lease Rate | \$10.00 Net + \$6.50 CAM & Tax**



### 1672 BARRINGTON STREET

**HALIFAX | DOWNTOWN CBD**

Located on the top floor of The Marble with great views downtown. Two open work areas, conference room, kitchenette, private office and hidden fire-proof safe.

**Available Space | 1,500 sf**

**Lease Rate | Call for Details**



LEASED

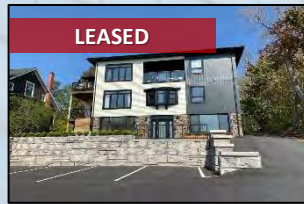
### 6450 QUINPOOL ROAD

**HALIFAX | WEST END**

2<sup>nd</sup> Floor office in mixed-use residential / commercial building on main artery in Halifax's west end. Includes boardroom, 2 private offices and reception. Parking onsite.

**Available Space | 1,250 sf**

**Lease Rate | Call for Details**



LEASED

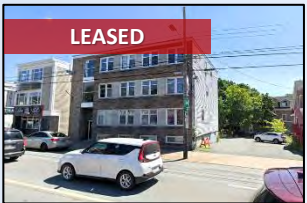
### 1394 BEDFORD HIGHWAY

**BEDFORD | NOVA SCOTIA**

Located on the main level of a renovated office building. Features 4 private offices, open work area, kitchen and patio. Excellent exposure and high traffic count.

**Available Space | 1,391 sf**

**Lease Rate | Call for Details**



LEASED

### 6454 QUINPOOL ROAD

**HALIFAX | WEST END**

Multi-tenant office building over 4 floors. Ample natural light. Both suites have leaseholds in place.

**Available Space | 650 sf & 975 sf**

**Lease Rate | Call for Details**

## RETAIL



NEW

### 1624 SACKVILLE DRIVE

**MIDDLE SACKVILLE | NOVA SCOTIA**

multi-tenant retail plaza anchored by Tim Hortons and a walk-in medical clinic. Completely turn-key. 1,900 SF unit includes loading area with double door access. Can be combined up to 2,520 SF.

**Available Space | 1,900 sf & 2x 1,260 SF**

**Lease Rate | Call for Details**



# LEASE LISTINGS

## MIXED-USE



### 226 BROAD STREET

**BEDFORD | WEST BEDFORD**

Office/Retail space in the rapidly growing Bedford West community. Sleek design elements and high-end finishes. New construction completed in 2023.

**Available Space | 1,446 sf – 2,600 sf**

**Lease Rate | Call for Details**



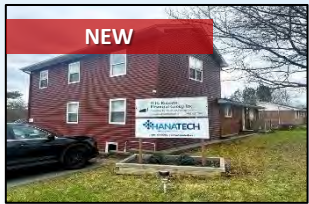
### 546 SACKVILLE DRIVE

**LOWER SACKVILLE | BUSINESS DISTRICT**

Mixed-Use office/retail space with built-out features, grade-level accessibility and exterior signage. Utilities not included.

**Available Space | 900 sf & 2,210 sf**

**Lease Rate | Call for Details**



### 1423 FALL RIVER ROAD

**FALL RIVER | NOVA SCOTIA**

Commercial space in mixed-use building. Heat pump with oil furnace heating. Paved parking at rear. VMS (Village Main Street) zoning.

**Available Space | 1,792 sf**

**Lease Rate | Call for Details**



### 91 SACKVILLE DRIVE

**LOWER SACKVILLE | NOVA SCOTIA**

2 Storey professional centre with attractive lobby and elevator. Ground floor unit with direct access to parking lot. Exterior signage options. Ample parking.

**Available Space | 1,200 sf**

**Lease Rate | \$20.00 PSF + \$8.00 CAM & Tax**



### 10 LOVETT LAKE COURT

**HALIFAX | BAYERS LAKE BUSINESS PARK**

Ground floor office/retail space with 5 private offices, boardroom, washroom and full kitchenette. Air conditioning and parking available.

**Available Space | 3,200 sf**

**Lease Rate | Call for Details**



### 19 ALMA CRESCENT

**HALIFAX | FAIRVIEW**

Suite 202 available in a 2<sup>nd</sup> floor walk-up space with accessible option. Common washrooms. Onsite amenities. High traffic location on public transit route.

**Available Space | 1,098 sf**

**Lease Rate | Call for Details**



### 5280-88 ST. MARGARETS BAY RD.

**UPPER TANTALLON | NOVA SCOTIA**

Ground floor office/retail in multi-tenant building. Ample paved parking. VC (Village Centre) zoning and walking distance to many local amenities.

**Available Space | 1,100 sf**

**Lease Rate | Call for Details**

## INDUSTRIAL



### ELMSDALE LOT 174 TJ

**ELMSDALE | ELMSDALE BUSINESS PARK**

New construction 12,500 SF industrial building with 24' clear ceiling height. 12' x 14' Grade loading doors in a 35' x 90' bay. Utilities extra. Available: December 2024.

**Unit Size | 3,072 sf – 12,500 sf**

**Lease Rate | \$16.00 Net + \$5.00 CAM & Tax**



### 1061 HIGHWAY 224

**SHUBENACADIE | NOVA SCOTIA**

Three (3) buildings located on a 10-acre lot for a combined total of 15,700 SF. Includes multiple grade loading and 1 dock loading door. Additional land available for lease.

**Available Space | 3,900 sf – 7,000 sf**

**Lease Rate | \$8.00 - \$12.00 Semi-Gross**



# LEASE LISTINGS

## INDUSTRIAL



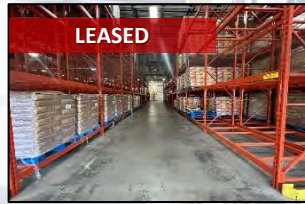
### 34 ISNOR DRIVE

**DARTMOUTH | BURNSIDE BUSINESS PARK**

Single tenant clear span building with 24.5' clear height. 2 Dock loading and 14' x 12' grade level loading. 28,000 SF secure fenced compound with ample parking. BGI zoning.

Available Space | 11,520 sf

Lease Rate | \$16.00 Net + \$6.32 CAM & Tax



### 181 JOSEPH ZATZMAN DR

**DARTMOUTH | BURNSIDE BUSINESS PARK**

24' Clear height industrial warehouse with 36' x 36' column spacing. 12 dock (10 levelers) and 4 grade loading doors. 3 Private offices, lunchroom and washroom.

Available Space | 34,242 sf

Lease Rate | \$15.00 Net + \$7.64 CAM & Tax



### 45 BORDEN AVENUE

**DARTMOUTH | BURNSIDE BUSINESS PARK**

Built-out corner office/warehouse with 13.5' - 16' clear height. Includes open reception, 6 private offices, meeting room, washrooms and kitchenette. Grade level loading.

Available Space | 3,051 sf

Lease Rate | \$14.00 Net + CAM & Tax TBD



### 14 QUEEN STREET

**TOWN OF TRURO | NOVA SCOTIA**

Large industrial building with 3 offices and 2 washrooms. 2x Grade loading and 2x dock loading doors. Excellent transportation hub throughout Nova Scotia.

Available Space | 9,000 sf

Lease Rate | \$11.00 Net + \$8.00 CAM & Tax



### 850 MAIN STREET

**WESTPHAL | DARTMOUTH**

Basement industrial space with 14.6' clear ceiling height. Includes 1 grade level and one interior dock loading. High traffic area. Utilities included.

Available Space | 9,900 sf

Lease Rate | \$10.50 Net + \$6.00 CAM & Tax



### 152 CROSSLEY AVENUE

**TRURO | NOVA SCOTIA**

Industrial building with 60' x 200' base area 2 mezzanines, showroom / office and lunchroom. Four (4) grade loading and exterior dock with plate. Available for sale\*

Available Space | 15,000 sf

Lease Rate | \$12.00 Net PSF



### 41 GURHOLT DRIVE

**DARTMOUTH | BURNSIDE BUSINESS PARK**

Large industrial warehouse with 23' - 25' clear height. Includes 2 dock loading and 2 grade loading doors.

Available Space | 16,747 sf

Lease Rate | \$11.00 Net + \$7.02 CAM & Tax



### 6359 BAYNE STREET

**HALIFAX | FAIRVIEW COVE AREA**

Large office/warehouse with excellent exposure on the Windsor Exchange. 20' Clear ceilings and 1x dock loading door. Next to Fairview Cove Terminal.

Available Space | 11,330 sf

Lease Rate | \$12.00 Net + \$4.50 CAM & Tax



### 30 OLAND COURT

**DARTMOUTH | BURNSIDE BUSINESS PARK**

Two level industrial office/warehouse space. 12' Ceilings and 1 grade level loading door. Air-conditioned rooftop HVAC system.

Available Space | 4,689 sf

Lease Rate | \$12.50 Net + \$7.38 CAM & Tax



### 10 AKERLEY BOULEVARD

**DARTMOUTH | BURNSIDE BUSINESS PARK**

Multi-tenant flex office/warehouse with 15' - 17'6" clear ceiling in warehouse. Includes dock level loading and ample parking. Excellent exposure on Akerley Boulevard.

Available Space | 4,747 sf

Lease Rate | \$14.00 Net + \$5.25 CAM & Tax



### MILFORD LANDS

**MILFORD INDUSTRIAL PARK | NOVA SCOTIA**

Industrial Zoned Land accessed at exit 9 on Highway 102. Lease term of 1-10 years. Utilities paid directly by the tenant (if applicable).

Lot Size | 5.63 acres - 13.63 acres

Land Lease Rate | \$0.30 PSF As-Is

\$0.50 PSF Fenced



### 1170 PARKWAY DRIVE

**PORT WILLIAMS | KINGS COUNTY**

Industrial office with 17.5' Clear ceiling height. Grade loading available. Gravel graded parking. 64' Water frontage.

Available Space | Portion of Main Level

Lease Rate | \$4,500/Month Net + CAM & Tax



# SALE LISTINGS

## OFFICE

SOLD

### 371 ST. MARGARETS BAY RD.

ARMDALE | HALIFAX

2 x Class "A" commercial condos. Suite 202 (605 SF) and Suite 203 (913 SF). Fully finished with private offices, kitchenette, and a boardroom. Onsite parking/storage.

Condo Size | 1,518 sf

List Price | \$500,000

### 81 ALDERNEY DRIVE

DARTMOUTH | DOWNTOWN

3 Storey designated heritage building with long term tenants. 1,000 SF Commercial space addition built on Portland Street. Ideal owner user property.

Building Size | 6,163 sf

List Price | \$1,750,000

## MIXED-USE

FIRM

### 942 COLE HARBOUR ROAD

COLE HARBOUR | DARTMOUTH

Retail/Commercial multi-tenant building with long-term restaurant leasehold in place. 1,400 SF Main level with 800 SF basement. C-1 (General Commercial) Zone.

Building Size | 6,526 sf

List Price | \$1,995,000

### 1105 BEDFORD HIGHWAY

BEDFORD | NOVA SCOTIA

3 Level commercial/residential apartment building, meticulously maintained. Paved parking for up to 6 vehicles. CMC (Mainstreet Commercial) zoning.

Building Size | 4,112 sf (excludes basement)

List Price | \$1,500,000

### 1530 HIGHWAY 7

EAST PRESTON | DARTMOUTH

Commercial building and development land on the edge of Dartmouth. 11' Clear height with 2 grade loading doors. Land zoning: R6a (Rural Residential Single Dwelling).

Lot Size | 23.8 acres (combined)

List Price | \$2,099,000

### 1170 PARKWAY DRIVE

PORT WILLIAMS | KINGS COUNTY

Main floor commercial, 2<sup>nd</sup> floor residential 2-bedroom Airbnb. 64' Water frontage. 17.5' Clear ceiling height and three (3) 14' x 14' grade loading. 2.3 acres lot.

Building Size | 4,790 sf

List Price | \$1,499,000

### 875 MAIN STREET

WESTPHAL | DARTMOUTH

Commercial/Industrial building containing 4 rental units. 11' Clear ceiling warehouse height and 3x grade loading doors. Main 2 level office area fully improved. C-4 zoning.

Building Size | 10,458 sf

List Price | \$2,850,000

### 271 PICTOU ROAD

TRURO | NOVA SCOTIA

Retail/Commercial single tenant building, reconstructed in 2019 with high-quality finishes. 1,400 SF main level with 800 SF basement. C-1 (General Commercial) Zone.

Building Size | 2,200 sf

List Price | \$495,000

UNDER AGREEMENT

### 905 SACKVILLE DRIVE

MIDDLE SACKVILLE | BUSINESS DISTRICT

Office/Industrial building with warehouse at rear and separate auto repair building over 2 PIDs. Each building offers 1 grade loading door. C2 zoning.

Building Size | 1,156 sf & 1,836 sf

List Price | \$1,799,000



# SALE LISTINGS

## MULTI-FAMILY



### 354-356-366 LINCOLN ST.

**KINGSTON | NOVA SCOTIA**

3 multi-family buildings, majority 2-bedroom units, including 5 appliances. Mature tenant base. Attractive landscape and good overall condition. Very low operating expenses. 6.0 cap on current NOI.

**Building Size | 34 units**

**List Price | \$5,525,000**

## INDUSTRIAL



### 30 LADY MARY WAY

**MOUNT UNIACKE INDUSTRIAL PARK | EAST HANTS**

Industrial condo located off of James Boyle Drive. 18' Clear ceiling height, and two (2) 14' x 12' grade loading drive through doors. Easy access to Highway 101.

**Unit Size | 2,583 sf**

**List Price | \$1,049,000**



### 100 BLUEWATER ROAD

**ALTANTIC ACRES PARK | BEDFORD**

Single tenant office/warehouse. Includes 1 private office, open office area and warehouse. 12' Clear ceiling height and 1x 10' grade level door. Light Industrial zone.

**Building Size | 6,000 sf**

**List Price | \$2,295,000**



### 152 CROSSLEY AVENUE

**TRURO | NOVA SCOTIA**

Industrial building with 2 mezzanines, showroom/office and lunchroom on a 1 acre lot. Four (4) grade loading and exterior dock with plate. Business Industrial zoning.

**Building Size | 15,000 sf**

**List Price | \$1,699,000**



### 355 HAROLD WHYNOT ROAD

**BRIDGEWATER | NOVA SCOTIA**

Commercial property currently used as an RV showroom and maintenance facility. Includes 5 grade loading, 7.5 Ton rooftop HVAC unit and ample paved parking.

**Building Size | 7,200 sf**

**List Price | \$2,950,000**

## LAND FOR DEVELOPMENT



### HIGHWAY 14, WINDSOR RD.

**CHESTER | NOVA SCOTIA**

Vacant land lots with GB General Business zoning allows for a variety of development uses, including residential. Minutes from Chester and easy access to Highway 103.

**Lot Size | Over 100 acres**

**List Price | \$795,000**



### 95 JAMES BOYLE DRIVE

**MOUNT UNIACKE | EAST HANTS**

Development land with existing shed structures which may remain or be removed. Subject to municipal buy-back agreement. BP (Business Park) Zone.

**Lot Size | 3.34 acres**

**List Price | \$550,000**



# SALE LISTINGS

## LAND FOR DEVELOPMENT



### NO. 102 HARDWOOD LANDS

**EAST HANTS | NOVA SCOTIA**

Property located on the west side of Highway 102 and adjacent to newly constructed Lantz Interchange (exit 8A).

**Lot Size | 80+ acres (over 2 PIDs)  
List Price | \$1,575,000**

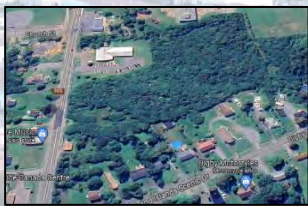


### 72 VISTA DRIVE

**STELLARTON | NOVA SCOTIA**

Mixed-Use Commercial / Residential development site with current rendering of 2 x 6 storey concrete buildings totaling 154 units and ample parking. C4 zoning area.

**Lot Size | 155,073 sf  
List Price | \$599,000**



### 137 VICTORIA STREET

**DIGBY | NOVA SCOTIA**

Development Approved zoning. Buildings A, B & C have a total Building Footprint of 42,554 SF with 151 surface and underground parking. Treed, sloping lot with municipal water and sewer.

**Lot Size | 6 acres  
List Price | \$1,500,000**



### NO. 102 HARDWOOD LANDS

**EAST HANTS | NOVA SCOTIA**

Development land located in the Corridor region of the Municipality of East Hants. RU (Rural Use) zoning. Property is located adjacent to the Lantz Interchange (exit 8A).

**Lot Size | 90 acres (over 2 PIDs)  
List Price | \$1,575,000**



### MILFORD LANDS

**MILFORD INDUSTRIAL PARK | NOVA SCOTIA**

Industrial Zoned Land accessed at exit 9 on Highway 102. priced at \$135K / acre pad ready or \$75K / acre raw.

**Lot Size | 5.63 – 13.63 acres  
List Price | \$500,000 | \$1,400,000**



**TOM GERARD, CCIM, SIOR**  
902-407-2489 Office  
902-830-1318 Mobile



**ALLY CONNORS, BBA**  
902-407-0001 Office  
902-717-4824 Mobile



**PHIL BOLHUIS, BCOMM**  
902-407-2854 Office  
902-293-4524 Mobile



**MATT OLSEN, BCD**  
902-407-2492 Office  
902-489-7187 Mobile



**PAUL PETTIPAS, LLB, MiCP**  
902-497-9636 Mobile



**JOHNNY YANG, BCOMM**  
902-407-2696 Office  
902-452-9073 Mobile



**AYOB ASSALI**  
902-456-2686 Mobile

For additional information, including marketing packages, please contact one of our Advisors directly or visit our website at: <http://kwcommercialhalifax.ca>

No warranty or representation, express or implied, is made as to the accuracy of the information contained herein and same is subject to errors, omissions, change of price, rental or other conditions, withdrawal from the market without notice, and to any specific listing conditions imposed by our principals. \*some conditions apply.

**KELLERWILLIAMS.**  
SELECT REALTY

**kw** COMMERCIAL  
ADVISORS™