

RETAIL FOR LEASE

958 Cole Harbour Road

Retail - For Lease

958 Cole Harbour Road, Dartmouth, NS B2V 1E6

kw COMMERCIAL
ADVISORS®

EXECUTIVE SUMMARY

958 COLE HARBOUR ROAD



OFFERING SUMMARY

BUILDING TYPE:	Street Retail
AVAILABLE SPACE:	2,750 SF
UNIT #:	Unit 3: 1,550 SF Unit 4: 1,200 SF
FRONTAGE:	Street frontage on Cole Harbour Road
PARKING:	Ample onsite parking
LEASE RATE:	\$15.00 PSF
CAM & TAX:	\$9.00

PROPERTY OVERVIEW

- Ground floor commercial/office space.
- Highly visible location with great signage opportunity
- Units prepared for tenant fit up and finishes to customize use of the space
- Ample parking onsite (46 paved parking spaces)

LOCATION OVERVIEW

The subject property is located at 958 Cole Harbour Road, Cole Harbour, Nova Scotia. The Cole Harbour Road area is a main thoroughfare connecting Cole Harbour with Portland Street. Cole Harbour Road is the main retail district of Cole Harbour. Traffic counts on Cole Harbour road exceed 30,000 vehicles per day.

KW COMMERCIAL ADVISORS
1160 Bedford Highway, Suite 100
Bedford, NS B4A 1C1

ALLY CONNORS, BBA
Commercial Real Estate Advisor
O: (902) 407-0001
C: (902) 717-4824
allythibodeau@kwcommercial.com
Nova Scotia

PROPERTY PHOTOS

958 COLE HARBOUR ROAD



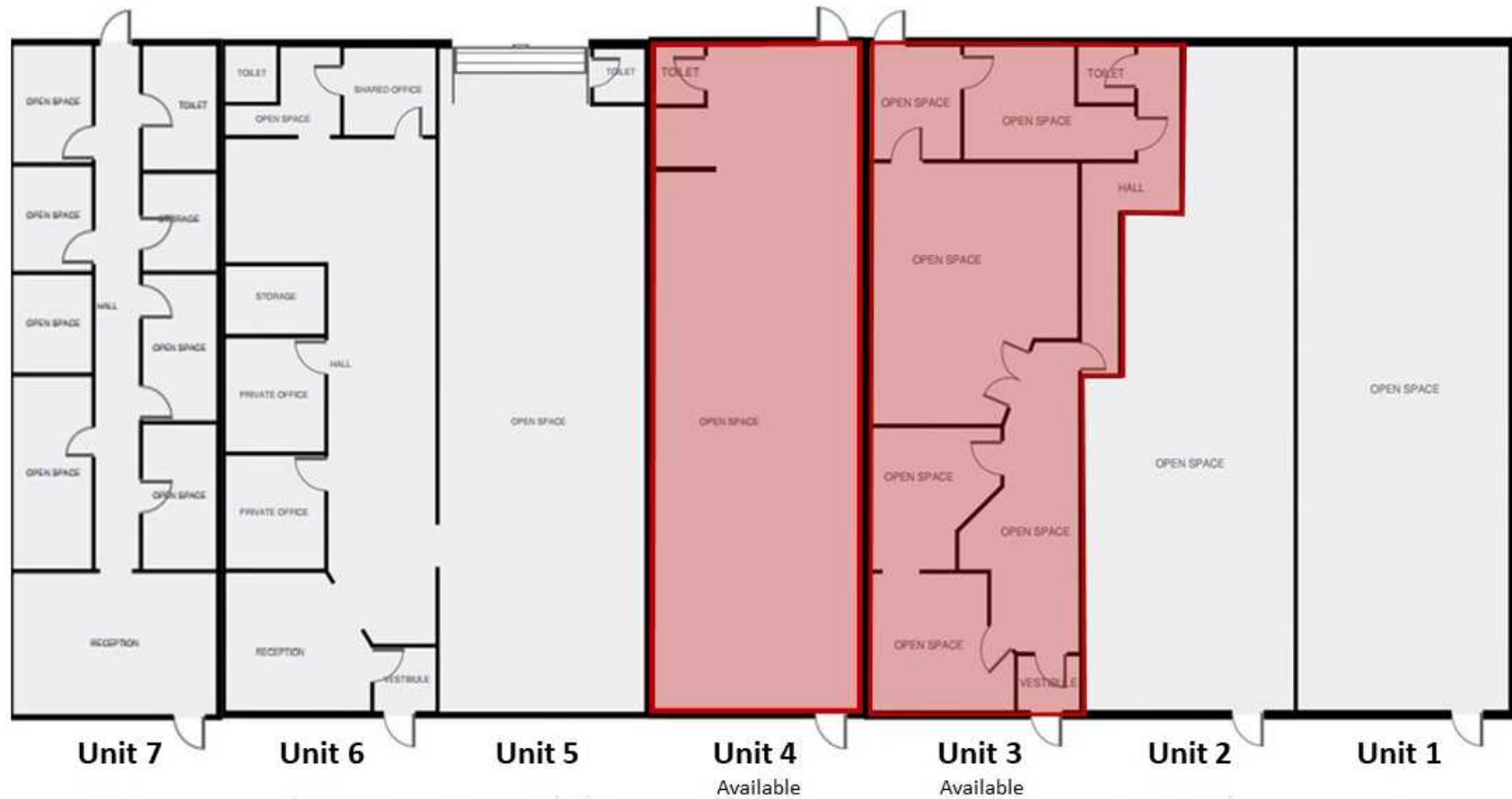
KW COMMERCIAL ADVISORS
1160 Bedford Highway, Suite 100
Bedford, NS B4A 1C1

ALLY CONNORS, BBA
Commercial Real Estate Advisor
O: (902) 407-0001
C: (902) 717-4824
allythibodeau@kwcommercial.com
Nova Scotia

Each Office Independently Owned and Operated

FLOOR PLAN

958 COLE HARBOUR ROAD



KW COMMERCIAL ADVISORS
1160 Bedford Highway, Suite 100
Bedford, NS B4A 1C1

ALLY CONNORS, BBA
Commercial Real Estate Advisor
O: (902) 407-0001
C: (902) 717-4824
allythibodeau@kwcommercial.com
Nova Scotia

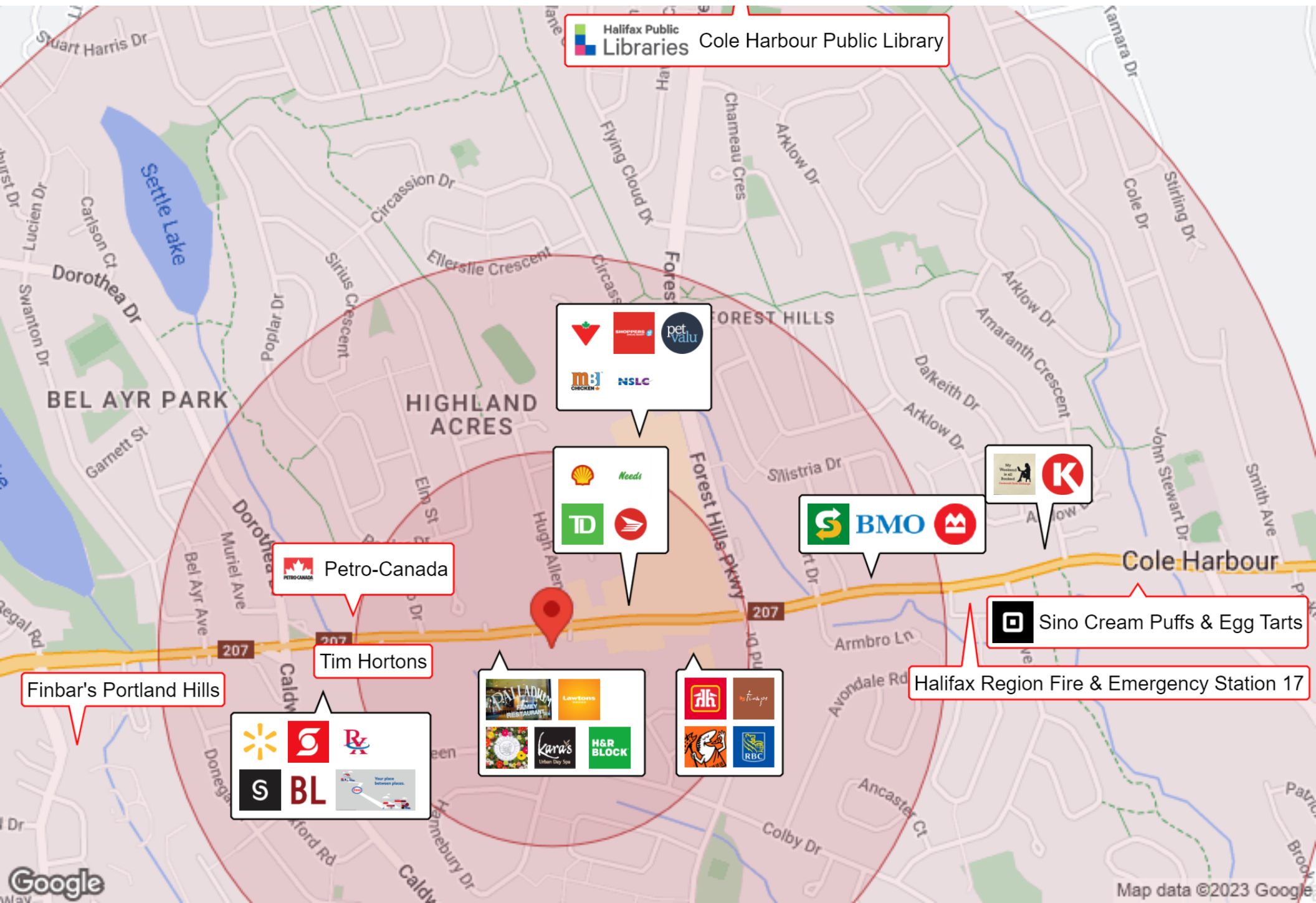
LOCATION MAPS

958 COLE HARBOUR ROAD



BUSINESS MAP

958 COLE HARBOUR ROAD



CONTACT INFORMATION

958 COLE HARBOUR ROAD



ALLY CONNORS
COMMERCIAL REAL ESTATE ADVISOR
KW COMMERCIAL ADVISORS

902-717-4824 | ALLYTHIBODEAU@KWCOMMERCIAL.COM