

FOR LEASE

10 LOVETT LAKE COURT | HALIFAX, NS

3,200 SF



LOCATION OVERVIEW

Located in Bayers Lake Business Park, Halifax, Lovett Lake Court is a newer commercial cul-de-sac located off of Chain Lake Drive with quick access to Highway 103, Chain Lake Drive retail area and Washmill Lake Road. Its proximity to the rapidly developing Bedford West, Bedford South and Clayton Park residential areas, and short drive to downtown Halifax and port facilities have all contributed to the success of the Bayers Lake Business Park.

PREMISES FEATURES

- Well appointed office space
- Ground floor incl: reception, boardroom, washroom, 6 private offices + access to basement storage
- Onsite paved parking
- Air-conditioned

SPACE AVAILABLE: Ground level: 3,200 SF

LEASE RATE: Please Call



Ayob Assali
Real Estate Advisor
902.456.2686
a.assali@kwcommercial.com

KELLER WILLIAMS SELECT REALTY
1160 Bedford Highway, Suite 100
Bedford, NS B4A 1C1
www.kwcommercialhalifax.com



FOR LEASE

10 LOVETT LAKE COURT | HALIFAX, NS

OFFICE BUILDING FOR LEASE | 1ST FLOOR - 3,200 SF



Ayob Assali
Real Estate Advisor
902.456.2686
a.assali@kwcommercial.com

kw COMMERCIAL
ADVISORS®

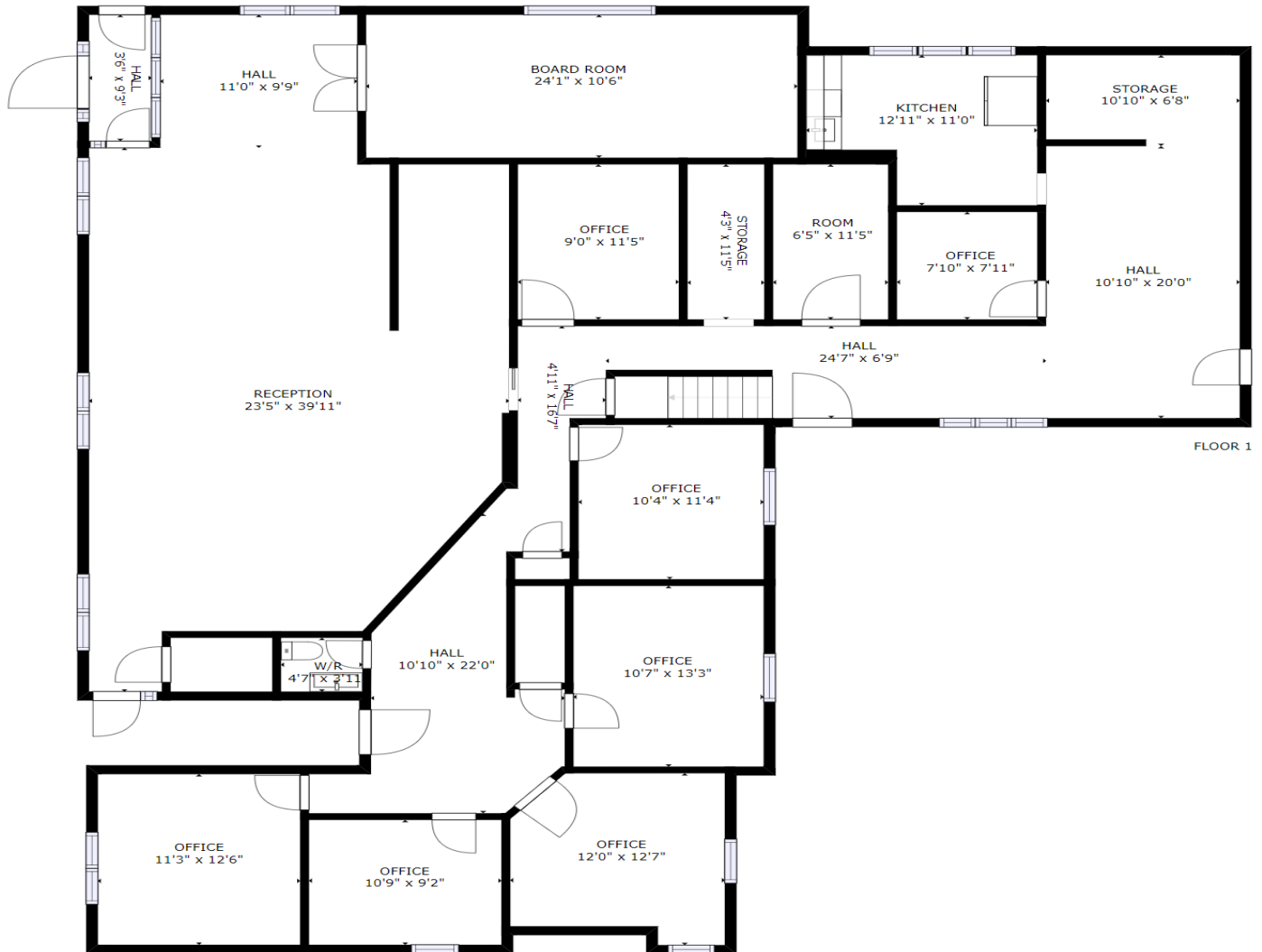


FOR LEASE

10 LOVETT LAKE COURT | HALIFAX, NS

OFFICE | 1ST FLOOR - 3200 SF

GROUND-LEVEL: 3,200 SF



Ayob Assali
Real Estate Advisor
902.456.2686
a.assali@kwcommercial.com

kw COMMERCIAL
ADVISORS®

