



**191 JOSEPH ZATZMAN DRIVE**  
**BURNSIDE BUSINESS PARK | DARTMOUTH**  
Units 1 & 2 featuring 18'6" clear ceiling height with one (1) 10' x 18' wide dock loading (additional possible). 53' Truck turning radius and rail siding potential at rear.

**Available Space | 7,699 sf**  
**Lease Rate | \$13.00 Net**



**20-24 AKERLEY BOULEVARD**  
**BURNSIDE BUSINESS PARK | DARTMOUTH**  
Large industrial warehouse with 16' – 20' clear height and 2nd level mezzanine. Includes 2 dock loading and 2 grade loading doors.

**Available Space | 21,709 sf**  
**Lease Rate | \$14.00 Net**



**915 EAST RIVER ROAD**  
**NEW GLASGOW | NOVA SCOTIA**  
Commercial property with 3,580 SF historical building offering prime redevelopment potential. C3 zoning allows for a variety of uses. Adjacent to Aberdeen Hospital.

**Lot Size | 1.13 acres**  
**List Price | \$1,049,000**



**145 COW BAY ROAD**  
**COW BAY | EASTERN PASSAGE**  
Main level automotive shop with 2nd level residential on 0.55 acre lot. 12'8" – 14' clear ceiling height. 12'10" Wide x 10' high grade loading. C2 (General Business) zone.

**Building Size | 2,225 sf**  
**List Price | \$849,000**



**1423 FALL RIVER ROAD**  
**FALL RIVER | NOVA SCOTIA**  
2-Level building with 2 commercial units and 2 residential units. Upper level includes 2 offices, open work area, kitchenette, and reception area on the main level. Lower level includes 3 offices, reception and waiting area.

**Building Size | 4,436 sf**  
**List Price | \$1,255,000**



**250 NORTH STREET**  
**BRIDGEWATER | NOVA SCOTIA**  
2 Industrial buildings on 1.29 acre lot with 5 private offices, boardroom, showroom, workshop and warehouse space. Zoned C5 (General Commercial) suitable for a range of industrial and commercial uses.

**Building Size | 5,400 sf**  
**List Price | \$1,395,000**



**355 HAROLD WHYNOT ROAD**  
**BRIDGEWATER | NOVA SCOTIA**  
Commercial property formerly used as an RV showroom and maintenance facility. Includes 5 grade loading, and ample paved parking on a 3.59 acre highway exposure lot.

**Building Size | 7,200 sf**  
**List Price | \$2,950,000**



**319 LAKE ROAD**  
**NOEL | NOVA SCOTIA**  
Mixed-Use property currently used as a CFIA approved butcher / slaughter house plus two residential buildings.

**Lot Size | 4 acres (2 PIDs)**  
**Building Size | 9,016 sf (4 Buildings)**  
**List Price | \$1,595,000**



**7859 HIGHWAY 14**  
**WINDSOR | BROOKLYN**  
25' x 46' two-level commercial building on 1.09 acre lot. Currently used as a dental clinic. LC (Local Commercial) zone. 331 Unfinished space on the lower level.

**Building Size | 2,300 sf**  
**List Price | \$549,000**



**41 GURHOLT DRIVE**  
**BURNSIDE BUSINESS PARK | DARTMOUTH**  
Large industrial warehouse with 23' – 25' clear height. Includes 2 dock loading and 2 grade loading doors. Fully renovated.

**Available Space | 16,747 sf**  
**Lease Rate | \$13.00 Net**



**264 NORTH STREET**  
**BRIDGEWATER | NOVA SCOTIA**  
Commercial gas bar offered as an asset sale or turn-key business. Currently operating as a Petro-Can, convenience store, Robins and One Stop. Renovated in 2023. C5 (General Business) zone. 1.31 Acre lot.

**Building Size | 3,250 sf**  
**List Price | \$2,475,000**



**4566 PROSPECT ROAD**  
**BAYSIDE | NOVA SCOTIA**  
Currently used as a retail and service centre for boats, including 2nd level office and storage. 16' Ceilings and 2 – 12' x 14' overhead doors. I-1 (Light Industrial) zone.

**Building Size | 4,500 sf**  
**List Price | \$599,000**

## FEATURED LISTINGS



**293 PARK ROAD**  
**ELMSDALE BUSINESS PARK | EAST HANTS**  
Industrial building with 1,200 SF mezzanine on 1.7 acres of land. 16' Clear ceiling in warehouse with 14' x 12' loading. Energy efficient rooftop heating/cooling for low maintenance operations.

**Building Size | 7,200 sf (Combined)**  
**List Price | \$2,595,000**



**875 MAIN STREET**  
**WESTPHAL | DARTMOUTH**  
Commercial / Industrial building containing 4 rental units. 11' Clear ceiling warehouse height and 3x grade loading doors. Main 2 level office area fully improved. C-4 zoning.

**Building Size | 10,458 sf**  
**List Price | \$2,350,000**



**396 STATION ROAD**  
**GREAT VILLAGE | COLCHESTER**  
Commercial property with 3 buildings on 1.99 acres. 12' – 22.5' Clear ceiling height. Includes grade loading, food grade walls and large solar system.

**Lot Size | 15,014 sf**  
**List Price | \$2,495,000**



**KELLER WILLIAMS**  
SELECT REALTY



Industrial  
& Office  
Specialist







### 196 HIGNEY AVENUE

#### DARTMOUTH | BURNSIDE BUSINESS PARK

Large warehouse with 40' clear ceilings and 40' x 39' column spacing. Seven (7) dock loading with levelers, multiple bays and truck turning radius of 53'.

**Available Space | 62,400 sf**  
**Lease Rate | \$18.00 Net**



### 1359 BARRINGTON STREET

#### CENTRAL BUSINESS DISTRICT | HALIFAX

Unique workspace on the corner of Barrington Street and Bishop Street. Ground floor commercial / retail space.

**Available Space | 623 sf**  
**Lease Rate | \$21.00 Net**



### 45 BORDEN AVENUE

#### BURNSIDE BUSINESS PARK | DARTMOUTH

Industrial unit with grade level loading and office buildout, open reception, meeting room and kitchenette. 13.5' - 16' Clear ceiling height. Ductless heating/cooling.

**Available Space | 3,049 sf**  
**Lease Rate | \$14.00 Net**



### 152 CROSSLEY AVENUE

#### TRURO | NOVA SCOTIA

Rear 2 bay portion. 100% Warehouse/ cold storage, fully insulated. Heat can be installed . Two (2) 16' x 16' grade level doors. BI (Business Industrial) zoning.

**Available Space | 3,000 sf - 7,300 sf**  
**Lease Rate | \$10.00 Net**



### 109 ILSLEY AVENUE

#### DARTMOUTH | BURNSIDE BUSINESS PARK

Versatile combined office / warehouse with 1 x 8' grade loading and 1 x 12' grade loading doors. Energy efficient unit. Sublease expiry: September 30th, 2029.

**Available Space | 2,222 sf**  
**Lease Rate | \$14.68 - \$16.04 Net**



### 11 PETTIPAS DRIVE

#### DARTMOUTH | BURNSIDE BUSINESS PARK

40' x 50' Unit available in an industrial building with 10' x 10' grade level loading and 16' ceiling height. Available Nov. 2025.

**Available Space | 2,000 sf (unit N)**  
**Lease Rate | \$16.00 Net**

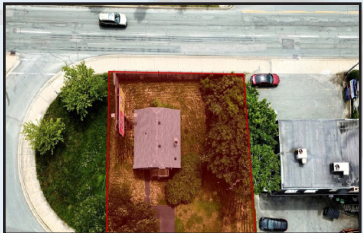


### 271 PICTOU ROAD

#### TRURO | NOVA SCOTIA

Retail/Commercial single tenant building, reconstructed in 2019 with high-quality finishes. 1,400 SF main level with 800 SF basement. C-1 (General Commercial) Zone.

**Building Size | 2,200 sf**  
**List Price | \$495,000**



### 98 LAKECREST DRIVE

#### MAIN STREET | DARTMOUTH

Commercial / Mixed-Use property along high traffic area. Current zoning permits the operation of car dealerships, offices, or multi-family as redevelopment.

**Building Size | 5,552 sf**  
**List Price | \$549,000**



### 68 HIGHFIELD PARK DRIVE

#### DARTMOUTH | NOVA SCOTIA

Class "A" mixed-use building with 2nd floor office. Includes 3 offices, reception and kitchenette. Corner windows for lots of natural light.

**Available Space | 900 sf**  
**Lease Rate | \$18.00 PSF**



### 45 THORNE AVENUE

#### BURNSIDE BUSINESS PARK | DARTMOUTH

New construction with each unit measuring 40' x 50'. 16' Clear ceilings with 12' x 14' grade loading door. 3 Ton ducted heat pumps installed. Available December 2025.

**Available Space | 2,000 sf - 4,000 sf**  
**Lease Rate | \$20.00 Net**



### 12 FIELDING AVENUE

#### BURNSIDE BUSINESS PARK | DARTMOUTH

Warehouse cross-dock space with 3 dock and 2 grade level loading. Office space distributed throughout warehouse entrances. Includes 6,000 SF yard space.

**Available Space | 3,365 sf**  
**Lease Rate | \$15.00 Net**



### 439 BEAVERBANK ROAD

#### BEAVERBANK | NOVA SCOTIA

Large undeveloped municipally serviced lot on the corner of Beaverbank Road and Majestic Avenue. Potential to rezone as high-rise development, not as-of right. Zoned for recreation.

**Lot Size | 12.35 acres**  
**List Price | \$2,995,000**



### LOT 2B BRUCE STREET

#### DARTMOUTH | WOODLAWN

"As of Right" multi-family development site. Potential for an 8-storey / 121,500 SF building. Favourable site grades for underground parking.

**Lot Size | 31,190 sf (0.72 acres)**  
**List Price | \$2,450,000**



### 30 GURHOLT DRIVE

#### BURNSIDE BUSINESS PARK | DARTMOUTH

Large industrial lot with approx. dimensions of 230' x 260'. To be graded and fenced. BGI (Burnside General) zoning. Snow clearing not included.

**Available Space | 60,000 sf**  
**Lease Rate | \$2.00 Semi-Gross**



### 475 MACELMON ROAD

#### DEBERT | NOVA SCOTIA

Industrial/office space in the "hub" of NS, with immediate availability. Featuring dock level loading, 18' clear height and cost-effective leasing. Units 4/5 & 9 available.

**Available Space | 3,900 sf & 4,200 sf**  
**Lease Rate | \$10.00 Net**



### NO. 102 HARDWOOD LANDS

#### EAST HANTS | NOVA SCOTIA

Development land located in the Corridor region of the Municipality of East Hants. RU (Rural Use) zoning. Property is located adjacent to the Lantz Interchange (exit 8A).

**Lot Size | 90 acres (2 PIDs)**  
**List Price | \$2,400,000**



### 18 JAMES BOYLE DRIVE

#### MOUNT UNIACKE | NOVA SCOTIA

Industrial property with 12' ceiling height, 10' x 12' overhead door for ease of operations. Ample land for expansions. Parking for 40-50 vehicles.

**Building Size | 4,224 sf (over 7 buildings)**  
**List Price | \$1,875,000**



### 15 GARLAND AVENUE

#### DARTMOUTH | BURNSIDE BUSINESS PARK

Concrete tilt-up construction industrial building with 3,359 SF office/showroom space and 4,851 SF warehouse. 24' Clear height, 1 dock and 1 grade loading door with 53' truck radius.

**Available Space | 8,210 sf**  
**Lease Rate | \$15.50 Net**



### 45-53 FIELDING AVENUE

#### BURNSIDE BUSINESS PARK | DARTMOUTH

Sublease until February 27, 2029, with 20'-24' clear ceilings. Includes four (4) dock and one (1) grade loading. 53' Tractor trailer turning radius. Racking negotiable.

**Available Space | 9,404 sf**  
**Sublease Rate | \$14.16 Net**



### 1000 WINDMILL ROAD

#### DARTMOUTH | BURNSIDE BUSINESS PARK

Flex office space with various suite sizes, including air conditioning, available. Ample parking. Flexible lease terms. Utilities included.

**Available Space | up to 17,885 sf**  
**Lease Rate | \$10.00 Net**



### MILFORD LANDS

#### MILFORD INDUSTRIAL PARK | NOVA SCOTIA

2 Large undeveloped lots ranging in size from 5.63 acres to 8 acre parcels. Generally flat topography. Also available for lease. IC Industrial Commercial Zone.

**Lot Size | 5.63-13.63 acres**  
**List Price | Call For Details**



### 34 ISNOR DRIVE

#### DARTMOUTH | BURNSIDE BUSINESS PARK

Single tenant clear span industrial building with 24.5' ceiling height. Includes 2 dock loading and 14' x 12' grade level loading. Lot to be subdivided.

**Building Size | 11,520 sf**  
**List Price | \$3,995,000**  
**Lease Rate | \$14.50 Net**



### 120 JOSEPH ZATZMAN DRIVE

#### BURNSIDE BUSINESS PARK | DARTMOUTH

11,928 SF Industrial building on 1.17 acre lot. Includes 3 grade loading and 1 oversized loading door and 5 Ton loading crane. Includes 2,960 SF steel Quonset hut.

**Building Size | 14,888 sf (combined)**  
**List Price | \$4,195,000**  
**Lease Rate | \$16.00 Net**

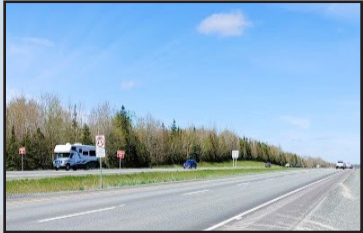


### ELMSDALE LOT 174 TJ

#### ELMSDALE BUSINESS PARK | ELMSDALE

New construction 12,500 SF industrial building with 24' clear ceiling height. 12' x 14' Grade loading doors in a 35' x 90' bay. Utilities extra. Available: May 2026.

**Available Space | 3,072 sf - 12,500 sf**  
**Lease Rate | \$17.00 Net**



### NO. 102 HARDWOOD LANDS

#### EAST HANTS | NOVA SCOTIA

Property located on the west side of Highway 102 and adjacent to newly constructed Lantz Interchange (exit 8A).

**Lot Size | 80+ acres (2 PIDs)**  
**List Price | \$1,575,000**

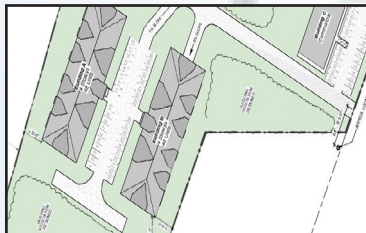


### 1061 HIGHWAY 224

#### SHUBENACADIE | NOVA SCOTIA

Three (3) buildings located on a 10-acre lot for a combined total of 15,700 SF. Includes multiple grade loading and 1 dock loading door. Additional land available for lease.

**Available Space | 3,900 sf - 7,000 sf**  
**Lease Rate | \$8.00 - \$12.00 Semi-Gross**



### 137 VICTORIA STREET

#### DIGBY | NOVA SCOTIA

Fully approved multi-family development site. 2 x 48 unit, 4-storey buildings plus 7,200 SF of commercial space.

**Lot Size | 6 acres**  
**List Price | \$995,000**



### HIGHWAY 14, WINDSOR ROAD

#### CHESTER | NOVA SCOTIA

Vacant land lots with GB General Business zoning allows for a variety of development uses, including residential or trailer park. Minutes from Chester and easy access to Highway 103 via Exit 8.

**Lot Size | over 100 acres**  
**List Price | \$595,000**