

FOR LEASE

kw COMMERCIAL
ADVISORS®
A DIVISION OF KELLER WILLIAMS SELECT REALTY

LOVETT LAKE COURT | BAYERS LAKE, NOVA SCOTIA

DEVELOPMENT LOT FOR SALE | 1 ACRE



TOM GERARD, CCIM, SIOR
Real Estate Advisor
902-830-1318
tomgerard@kwcommercial.com

AYOB ASSALI
Office & Retail Leasing
902-456-2686
a.assali@kwcommercial.com

KW COMMERCIAL ADVISORS
Bayswater Place, Suite 100
1160 Bedford Highway
Bedford, NS B4A 1C1
www.kwcommercialhalifax.com

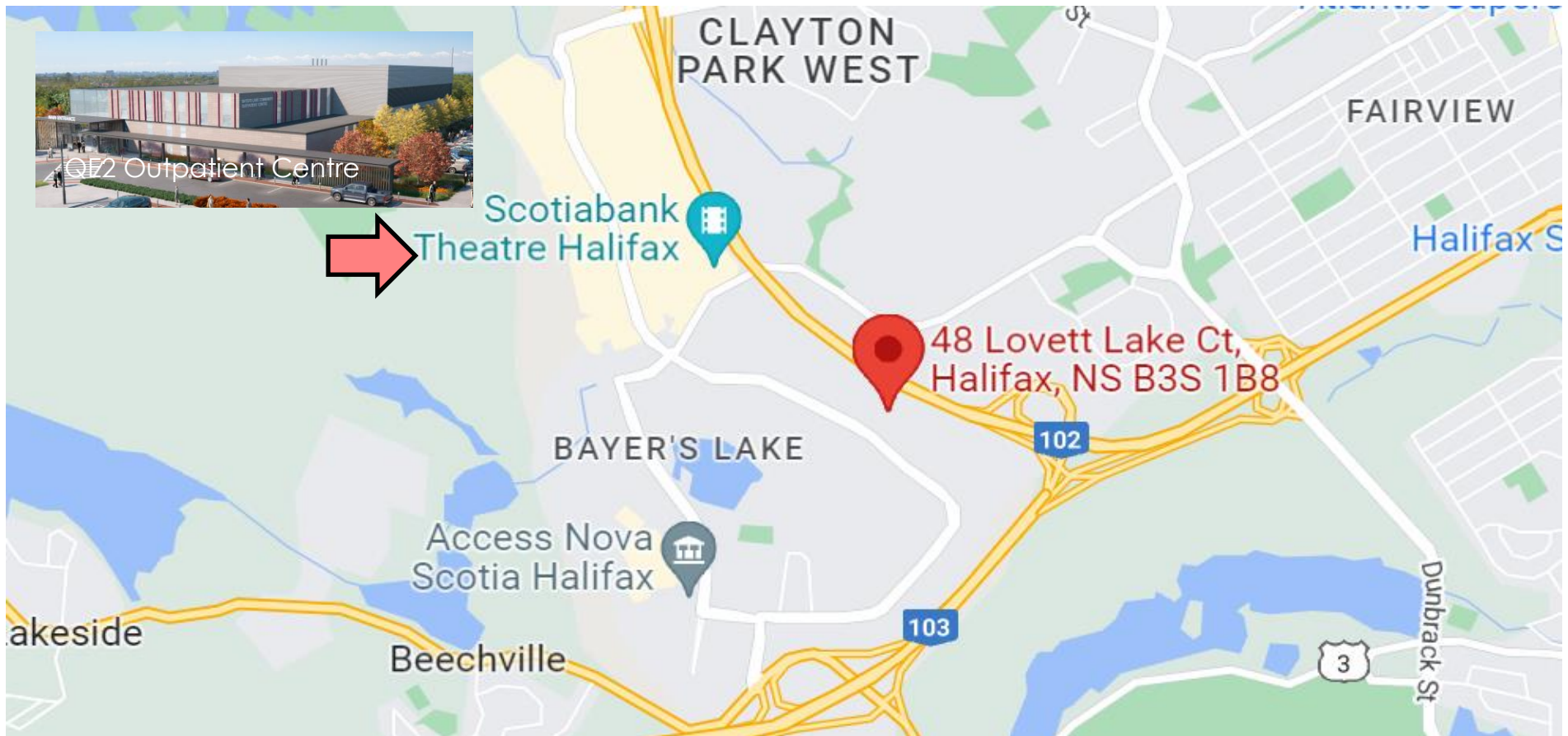
EXECUTIVE SUMMARY

Property Address:	Lovett Lake Court, Bayers Lake, NS
Property Type:	Commercial / Industrial Building Lot
PID #:	To be subdivided from 41184110
Site Size:	1 Acre, approximately
Site Boundaries:	Irregular. Final boundaries to be confirmed
Driveway:	New access driveway to be installed at Buyer's cost
Easements:	4.0 metre wide Service Easement for drainage purposes across the front
Municipal Services:	All municipal services including water and sewer
Zoning:	I-3 (General Industrial Zone)
Property Management:	BlackBay Real Estate
Assessed Value:	TBD
List Price:	\$695,000

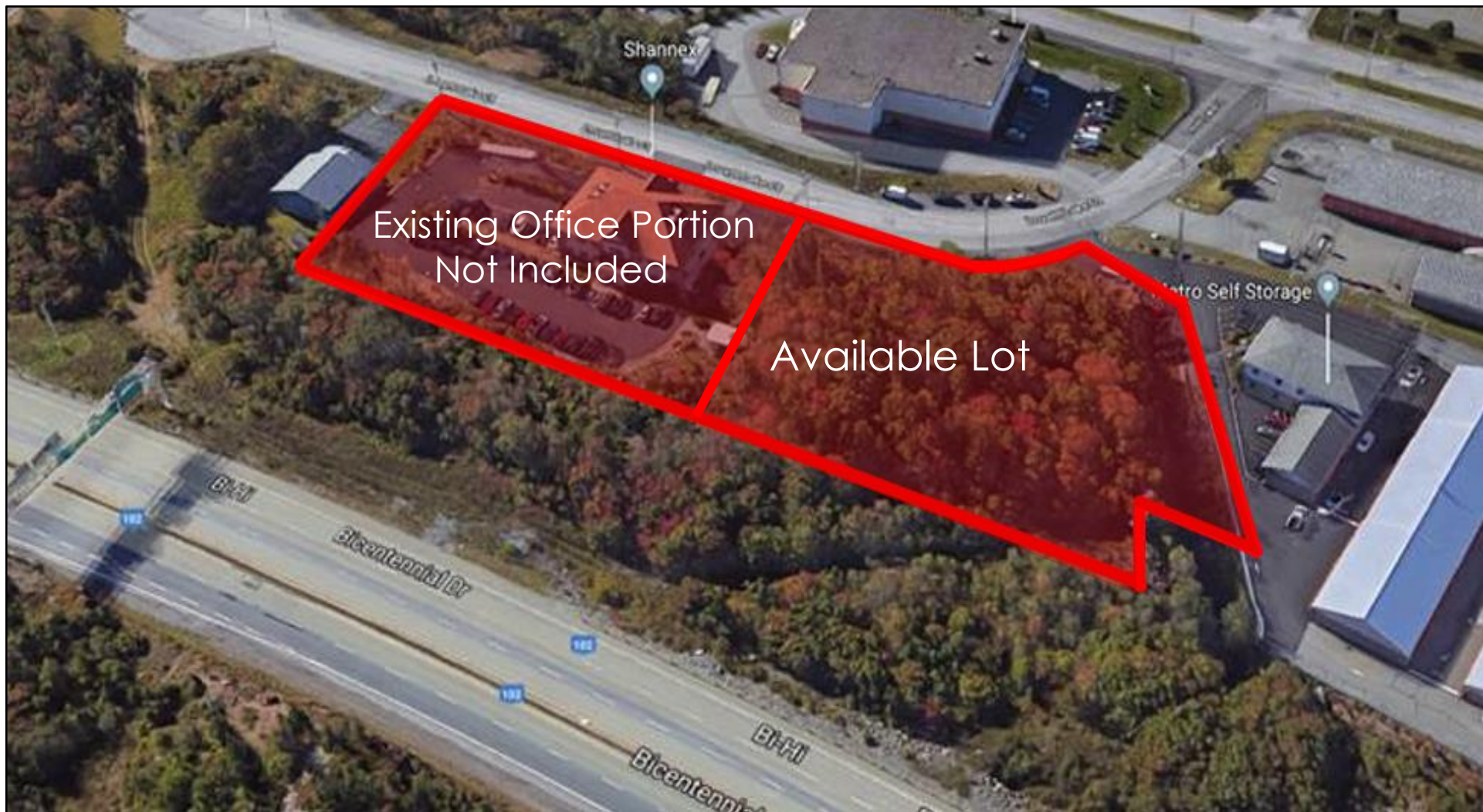


NEIGHBOURHOOD OVERVIEW

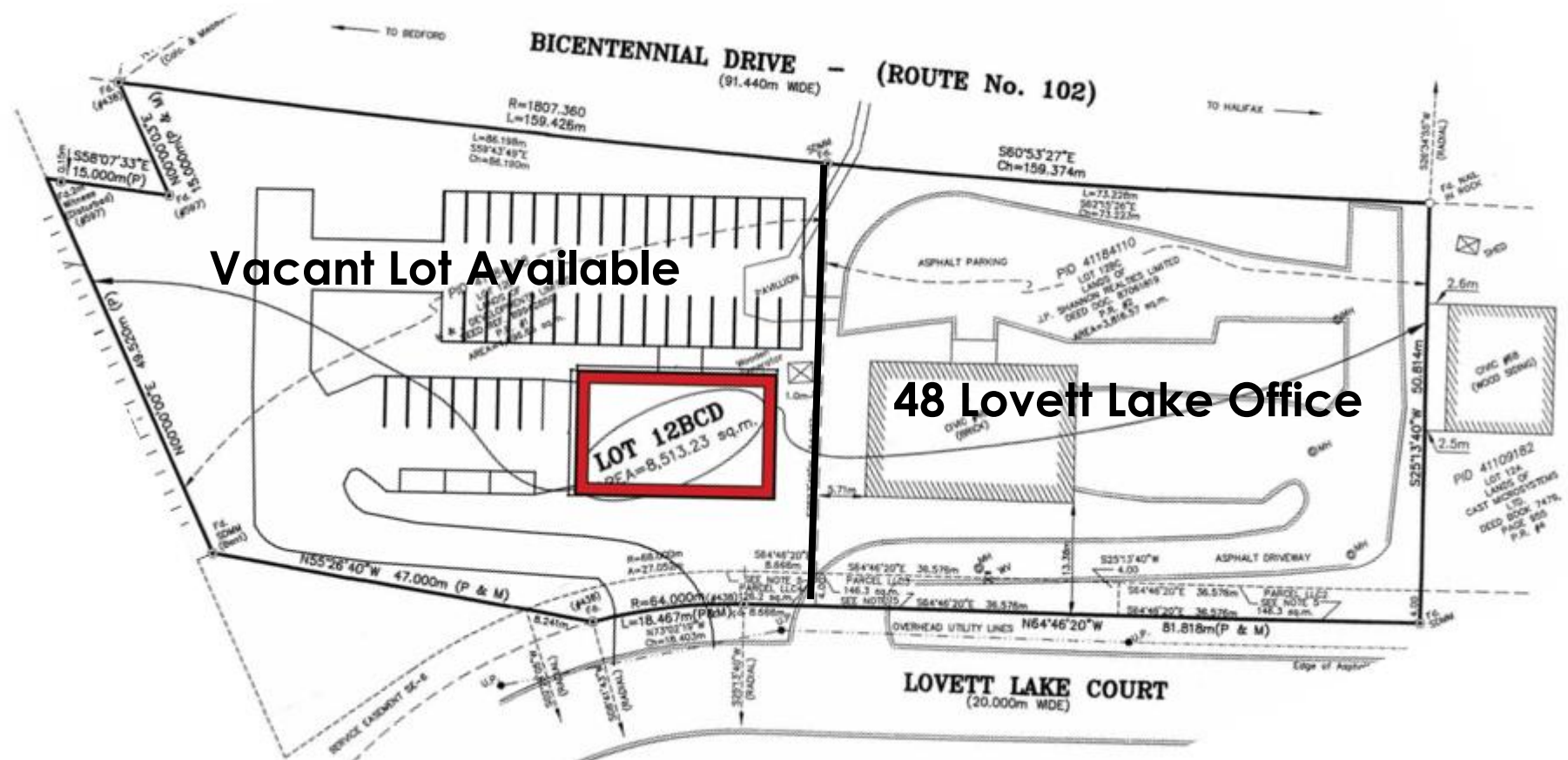
Well positioned in the Bayers Lake Business Park, the subject location offers quick and easy access to neighbouring Clayton Park West and Fairview suburbs, Lakeside - Timberlea and the Trans Canada Highway 103. Nearby shopping amenities include a vast array of retail storefronts along Chain Lake Drive, including Value Village, Walmart, Costco, Atlantic Superstore, among others. Amenities also include various chain and local restaurants, the Scotiabank Theatre Halifax and the new QE2 Community Outpatient Centre under construction on Susie Lake Crescent.



AERIAL OVERVIEW



SITE SPECIFICATIONS | CONCEPT PLAN



SITE PHOTOS



CONTACT INFORMATION



TOM GERARD, CCIM, SIOR

Real Estate Advisor

902-830-1318

tomgerard@kwcommercial.com

KW COMMERCIAL ADVISORS

www.kwcommercialhalifax.com

[KWcommercialHFX@twitter.com](https://twitter.com/KWcommercialHFX)