

# FOR SUBLEASE

## 2830 AGRICOLA STREET | HALIFAX, NS

OFFICE | 1,963 SF



### LOCATION OVERVIEW

Centrally located in Halifax's North End with great visibility and on-site parking for clients and staff. This is a rare opportunity in a trendy area, and offers close proximity to many major amenities.

### PROPERTY FEATURES

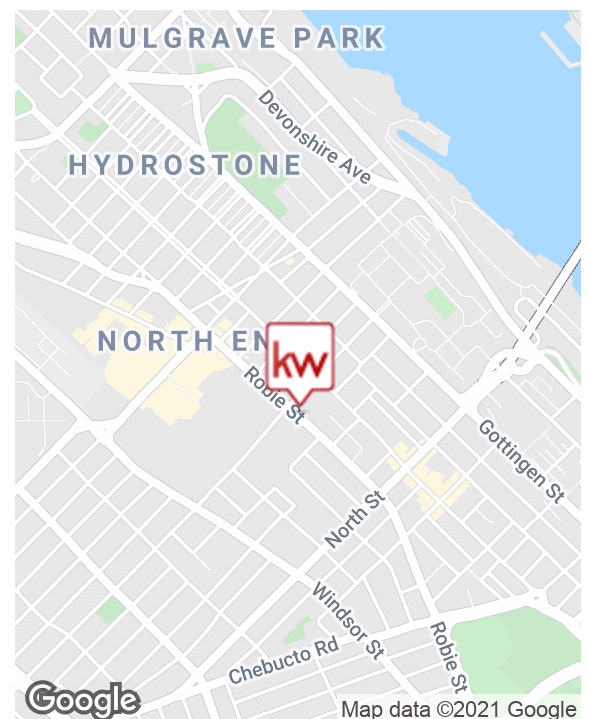
- Air conditioned office space with new finishes in a contemporary building
- Layout includes two offices, 2 barrier free washrooms, one large classroom, one small classroom, reception and kitchenette
- Free onsite parking (dedicated) & easily accessible
- Located on the lower level
- Exterior signage opportunity

**SPACE AVAILABLE:** 1,963 SF (Suite 201)

**AVAILABILITY:** With 30 Days' Notice

**LEASE RATE:** \$3,983.00/Month + Power

**LEASE TERM EXPIRY:** April 1, 2022



# FOR SUBLEASE

## 2830 AGRICOLA STREET | HALIFAX, NS

OFFICE | 1,963 SF



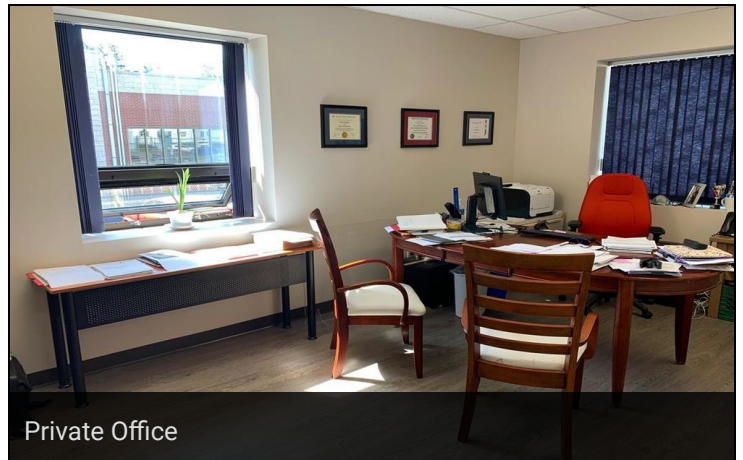
Reception



Reception



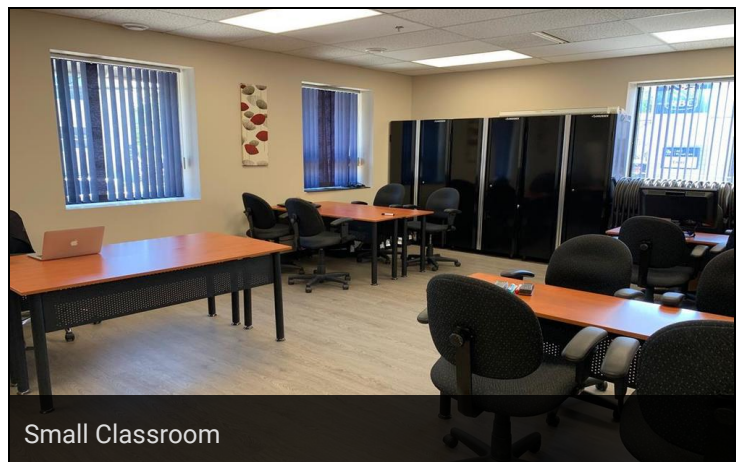
Private Office



Private Office



Large Classroom



Small Classroom

**Ally Connors**  
Real Estate Advisor  
902.717.4824  
[allythibodeau@kwcommercial.com](mailto:allythibodeau@kwcommercial.com)

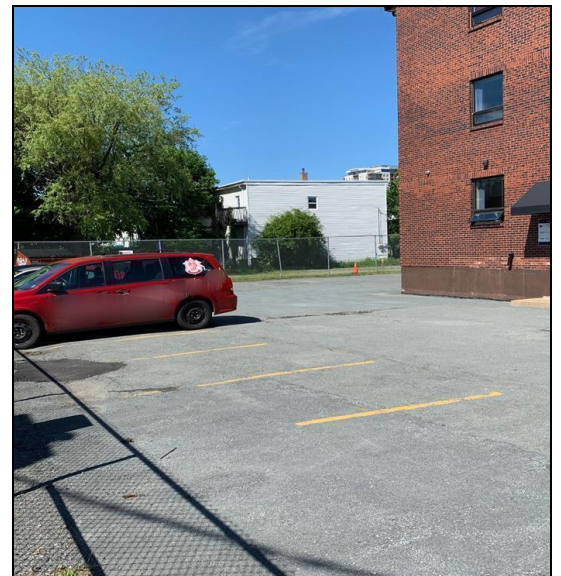
**kw** COMMERCIAL  
ADVISORS®



# FOR SUBLEASE

## 2830 AGRICOLA STREET | HALIFAX, NS

OFFICE | 1,963 SF



**Ally Connors**  
Real Estate Advisor  
902.717.4824  
[allythibodeau@kwcommercial.com](mailto:allythibodeau@kwcommercial.com)

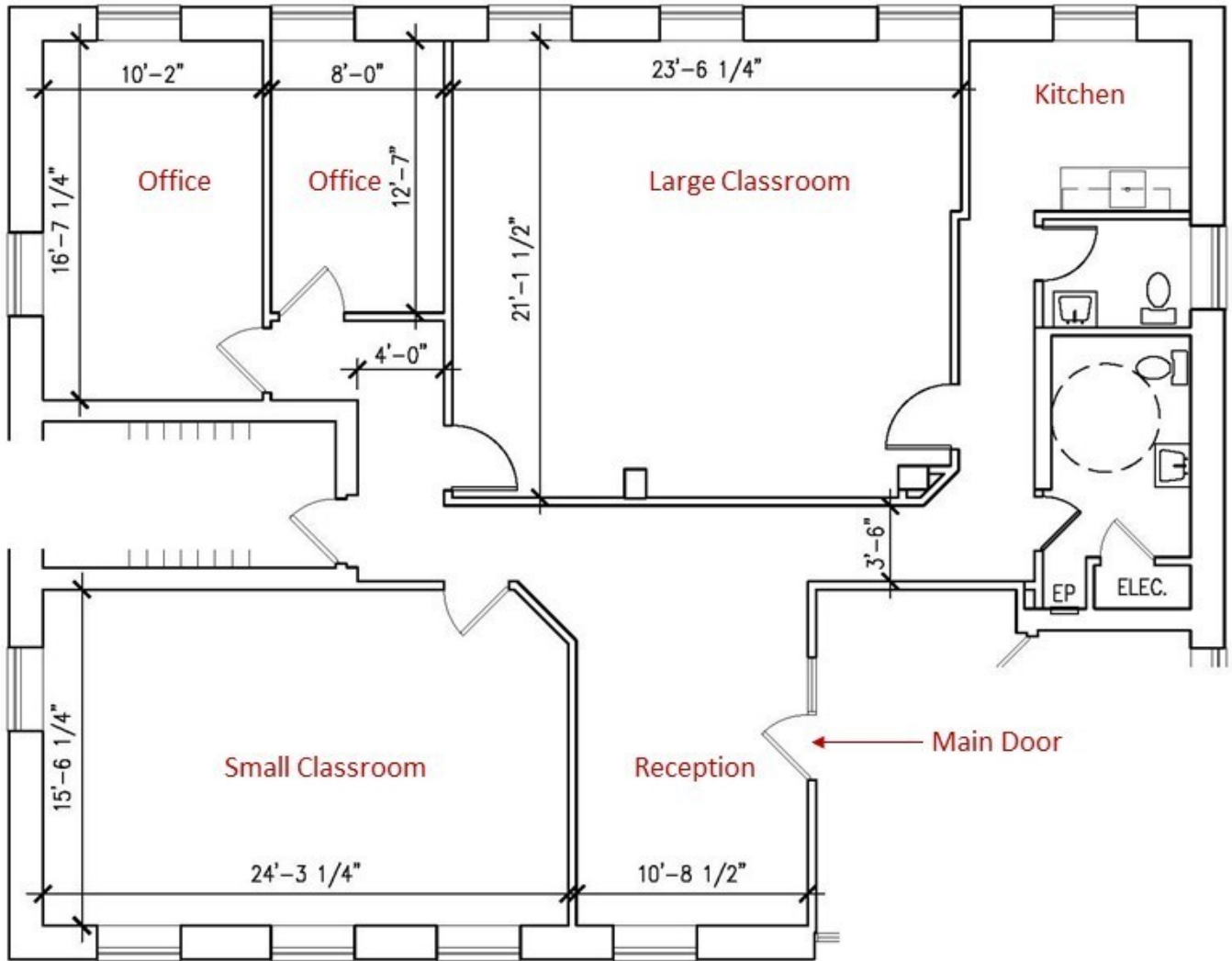
**kw** COMMERCIAL  
ADVISORS®



# FOR **SUBLEASE**

## 2830 AGRICOLA STREET | HALIFAX, NS

OFFICE | 1,963 SF



← **AGRICOLA STREET** →



# FOR SUBLEASE

## 2830 AGRICOLA STREET | HALIFAX, NS

OFFICE | 1,963 SF



**Ally Connors**  
Real Estate Advisor  
902.717.4824  
allythibodeau@kwcommercial.com

**kw** COMMERCIAL  
ADVISORS

