

FOR LEASE

194 WYSE ROAD | DARTMOUTH, NS

RETAIL/COMMERCIAL | 700 SF + YARD AREA



LOCATION OVERVIEW

The subject property is centrally located between Windmill Road and Victoria Road and within walking distance to the Halifax MacDonald Bridge, Metro Transit Bus Terminal, the Dartmouth Sportsplex, the Dartmouth Common, as well as the waterfront community. This is a high-traffic location adjacent to a newly constructed Sobeys grocery store with an average annual daily traffic count of 14,960.

PREMISES FEATURES

- Large open reception, 2 private offices and washroom
- Ample paved onsite parking
- Adjacent Harbour Cities Veterinary Hospital
- Pylon signage
- 3,600 SF of yard space (can be fenced in)

SPACE AVAILABLE: 700 SF + Yard Area

LEASE RATE: \$2,000 / Month



FOR LEASE

194 WYSE ROAD | DARTMOUTH, NS

RETAIL/COMMERCIAL | 700 SF + YARD AREA



Ally Connors
Real Estate Advisor
902.717.4824
allythibodeau@kwcommercial.com

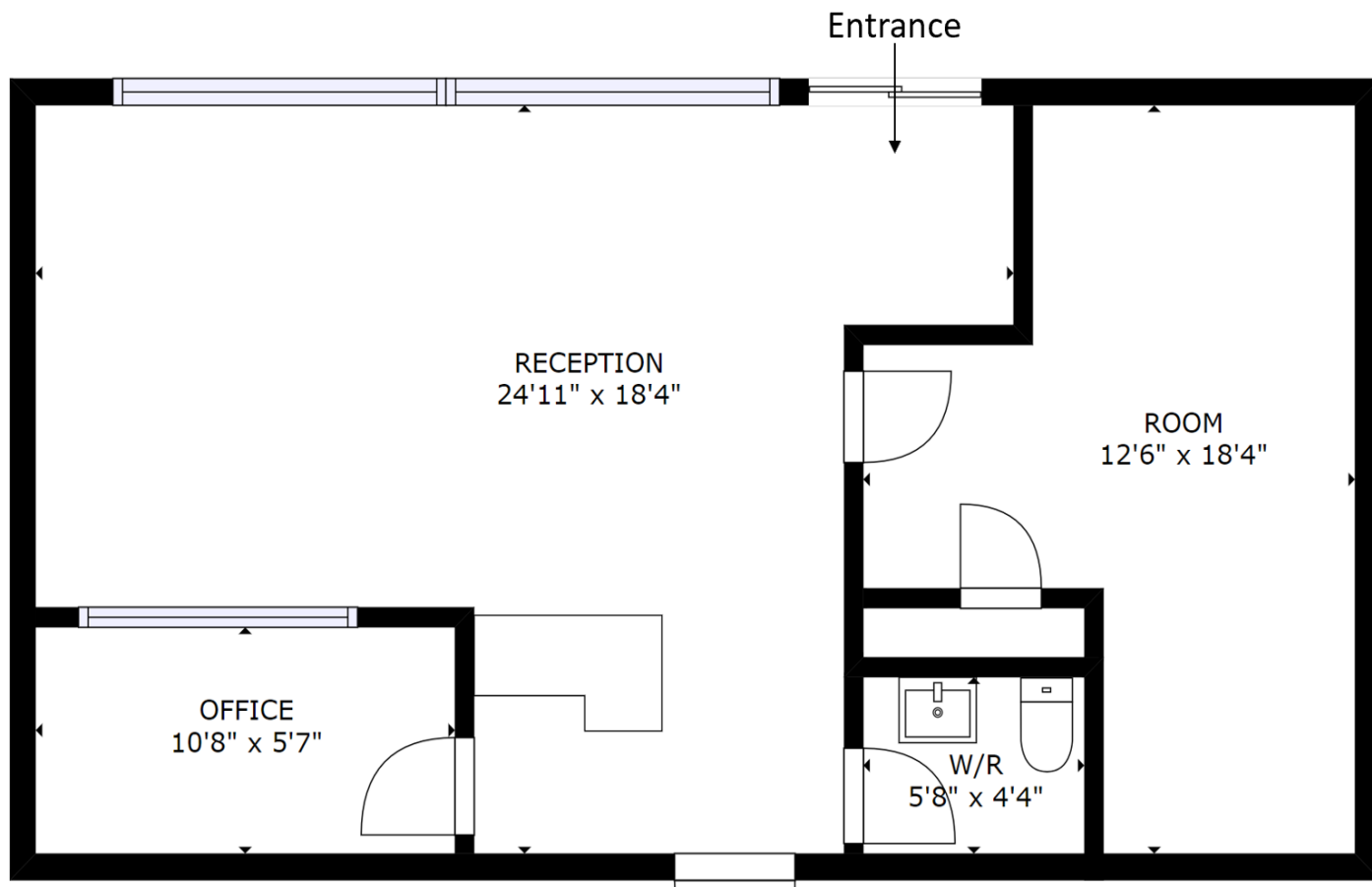
kw COMMERCIAL
ADVISORS®



FOR LEASE

194 WYSE ROAD | DARTMOUTH, NS

RETAIL/COMMERCIAL | 700 SF + YARD AREA



FOR LEASE

194 WYSE ROAD | DARTMOUTH, NS

RETAIL/COMMERCIAL | 700 SF + YARD AREA



Ally Connors
Real Estate Advisor
902.717.4824
allythibodeau@kwcommercial.com

kw COMMERCIAL
ADVISORS®

