

FOR LEASE

95 MONTEBELLO DRIVE | DARTMOUTH, NS

STREET RETAIL | 1,500 SF



LOCATION OVERVIEW

The subject property is located at 95 Montebello Drive, Dartmouth, Nova Scotia on a main thoroughfare connecting with Waverley Road. The premises are the only commercially zoned space in the area serving over 2,000 families in the community.

PROPERTY FEATURES

- Excellent exposure from both Montebello Drive and Caledonia Road/ Breeze Drive
- Ground floor retail space with great signage opportunity
- Ample onsite parking
- Located in a strong node in the community

SPACE AVAILABLE: 1,500 SF

AVAILABILITY: Immediately

LEASE RATE: \$24.85 Semi-Gross PSF (utilities not included)



Ally Connors
Real Estate Advisor
902.717.4824
ally.thibodeau@gmail.com

KELLER WILLIAMS SELECT REALTY
6080 Young Street, Suite 308
Halifax, NS B3K 5L2
www.kwcommercialhalifax.com



FOR LEASE

95 MONTEBELLO DRIVE | DARTMOUTH, NS

STREET RETAIL | 1,500 SF



Ally Connors
Real Estate Advisor
902.717.4824
ally.thibodeau@gmail.com

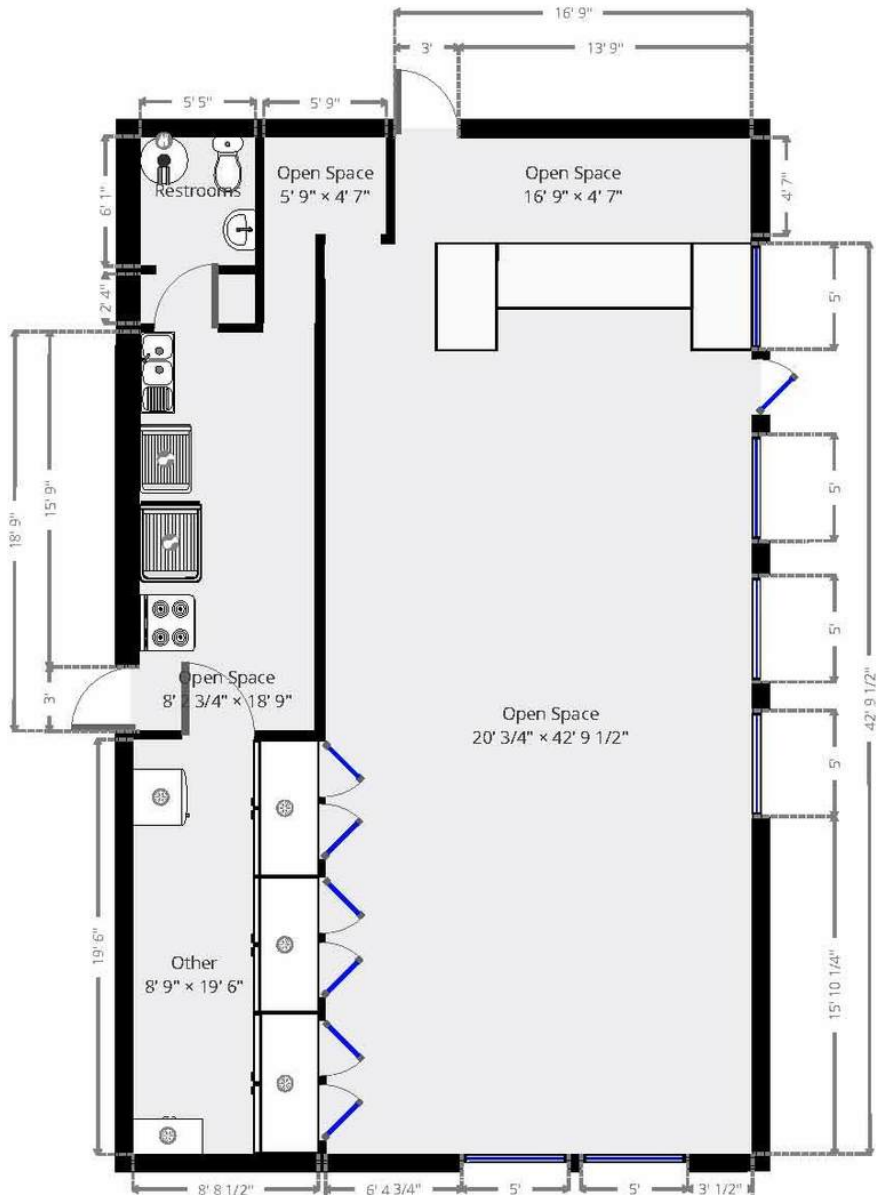
kw COMMERCIAL
ADVISORS®



FOR LEASE

95 MONTEBELLO DRIVE | DARTMOUTH, NS

STREET RETAIL | 1,500 SF



1 95 MONTEBELLO DRIVE
Floor Plan

