

FOR LEASE

280 SACKVILLE DRIVE | LOWER SACKVILLE, NS

OFFICE | +/- 2,100 SF



LOCATION OVERVIEW

Lower Sackville is one of HRM's fastest growing communities with a local market population of over 32,000 people. Sackville Drive is the major retail street serving the Lower Sackville area with Average Daily Traffic count exceeding 56,000 vehicles. Nearby major retailers include Canadian Tire, Sobeys and Atlantic Superstore.

PROPERTY FEATURES

- 10 offices, reception area,
- 2 washrooms, building is barrier free kitchenette
- 8 asphalt paved parking spaces
- Two (2) ducted heatpumps and 2 air exchangers
- Clean, bright, immaculate condition

AVAILABLE SPACE: +/- 2,100 SF

LEASE RATE: \$14.00 PSF Net + \$6.50 CAM and Tax (2018 est.)

AVAILABILITY: Immediate



BRIAN WOODS, ABR

Real Estate Advisor
902.830.5060

brianwoods@kwcommercial.com

KELLER WILLIAMS SELECT REALTY

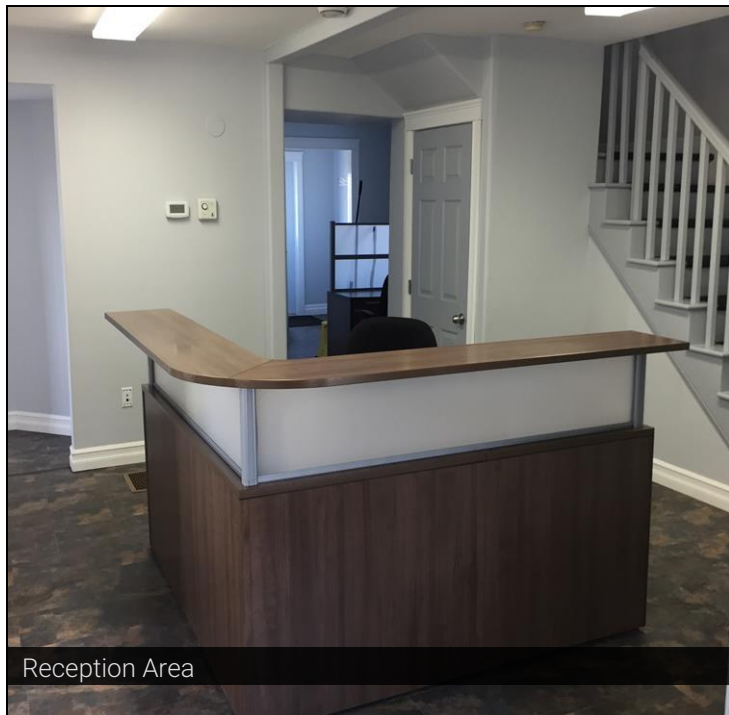
6080 Young Street, Suite 308
Halifax, NS B3K 5L2

www.kwcommercialhalifax.com

FOR SALE

280 SACKVILLE DRIVE | LOWER SACKVILLE, NS

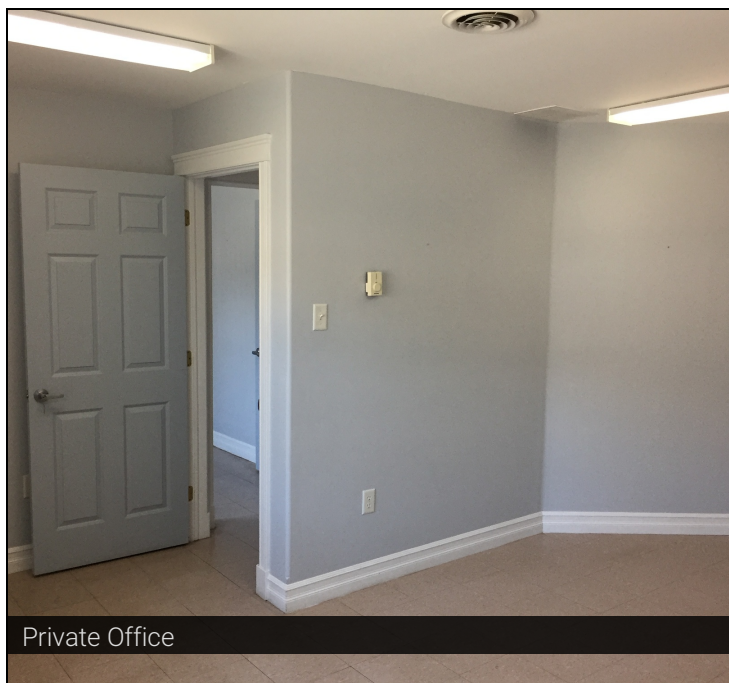
OFFICE | +/- 2,100 SF



Reception Area



Reception Area



Private Office



Rear Building

BRIAN WOODS, ABR
Real Estate Advisor
902.830.5060
brianwoods@kwcommercial.com

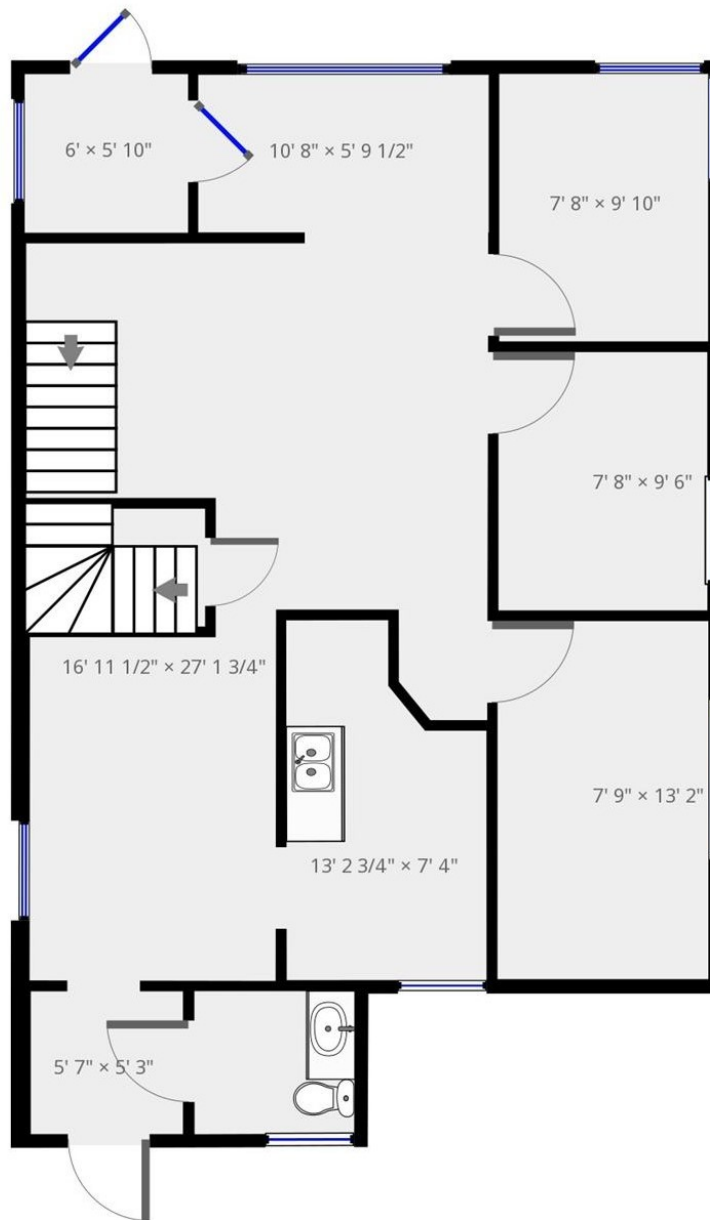
kw COMMERCIAL
ADVISORS®

FOR SALE

280 SACKVILLE DRIVE | LOWER SACKVILLE, NS

OFFICE | +/- 2,100 SF

MAIN LEVEL



BRIAN WOODS, ABR

Real Estate Advisor

902.830.5060

brianwoods@kwcommercial.com

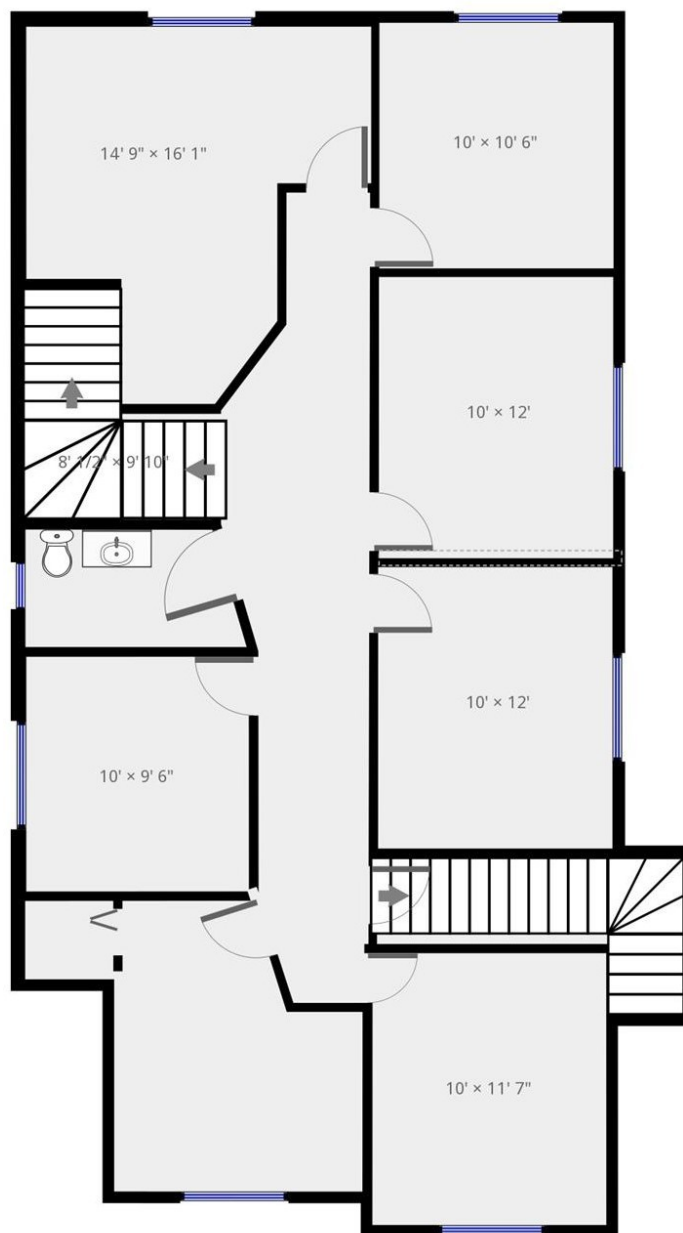
kw COMMERCIAL
ADVISORS®

FOR SALE

280 SACKVILLE DRIVE | LOWER SACKVILLE, NS

OFFICE | +/- 2,100 SF

2ND LEVEL



BRIAN WOODS, ABR

Real Estate Advisor

902.830.5060

brianwoods@kwcommercial.com

kw COMMERCIAL
ADVISORS®