

FOR LEASE

114 CHAIN LAKE DRIVE - BAYERS LAKE BUSINESS PARK | HALIFAX, NS

WAREHOUSE / OFFICE | **10,800 SF**



LOCATION OVERVIEW

Bayers Lake Business Park has enjoyed outstanding growth since its inception in the mid 1980s. It's location at the confluence of Highways 102 and 103, its proximity to the rapidly developing Bedford West, Bedford South and Clayton Park residential areas, and short drive to downtown Halifax and port facilities have all contributed to the success of the Bayers Lake Business Park. Over 580 acres (236 hectares) in size, Bayers Lake Business Park represents a major concentration of light industrial and commercial activity in Greater Halifax.

PROPERTY FEATURES

- The space is located at the east end of the building adjacent to Nova Trophy
- Units 1-3: +/- 10,800 SF comprised of 3 warehouse bays | 2,800 SF office with bonus mezzanine
- Four (4) dock load doors
- Fully sprinklered, 22' clear ceiling height in warehouse
- Paved parking and loading areas in front and rear of premises

SPACE AVAILABLE: 10,800 SF

LEASE RATE: \$10.00 Net PSF + \$5.50 CAM & Tax



BRIAN WOODS, ABR

Real Estate Advisor
902.830.5060
brianwoods@kwcommercial.com

KELLER WILLIAMS SELECT REALTY

6080 Young Street, Suite 308
Halifax, NS B3K 5L2
www.kwcommercialhalifax.com

FOR LEASE

114 CHAIN LAKE DRIVE - BAYERS LAKE BUSINESS PARK | HALIFAX, NS

WAREHOUSE / OFFICE | 10,800 SF



BRIAN WOODS, ABR
Real Estate Advisor
902.830.5060
brianwoods@kwcommercial.com

kw COMMERCIAL
ADVISORS®

FOR LEASE

114 CHAIN LAKE DRIVE - BAYERS LAKE BUSINESS PARK | HALIFAX, NS

WAREHOUSE / OFFICE | 10,800 SF



BRIAN WOODS, ABR
Real Estate Advisor
902.830.5060
brianwoods@kwcommercial.com

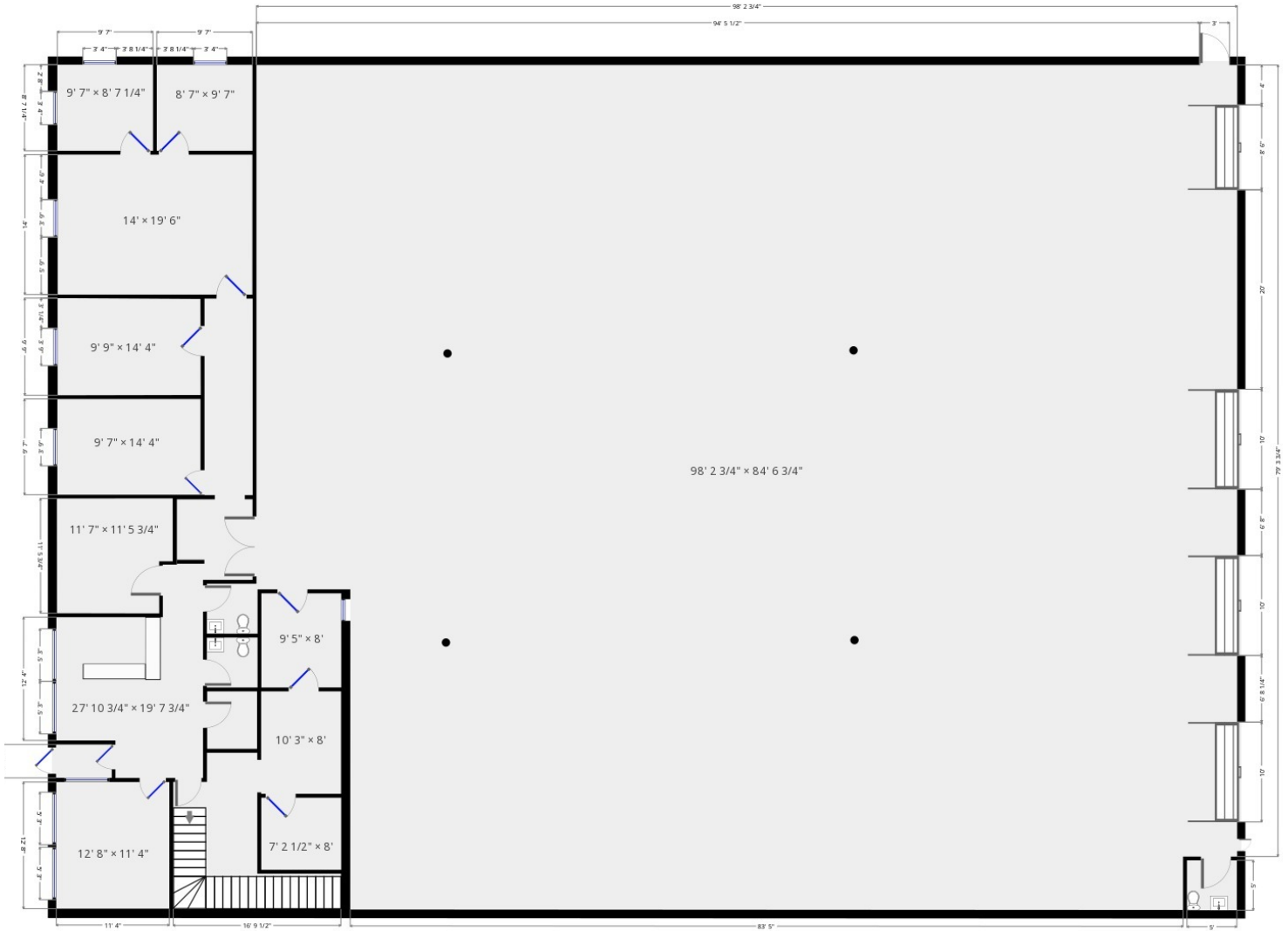
kw COMMERCIAL
ADVISORS®

FOR LEASE

114 CHAIN LAKE DRIVE - BAYERS LAKE BUSINESS PARK | HALIFAX, NS

WAREHOUSE / OFFICE | 10,800 SF

UNITS 1-3



BRIAN WOODS, ABR
Real Estate Advisor
902.830.5060
brianwoods@kwcommercial.com

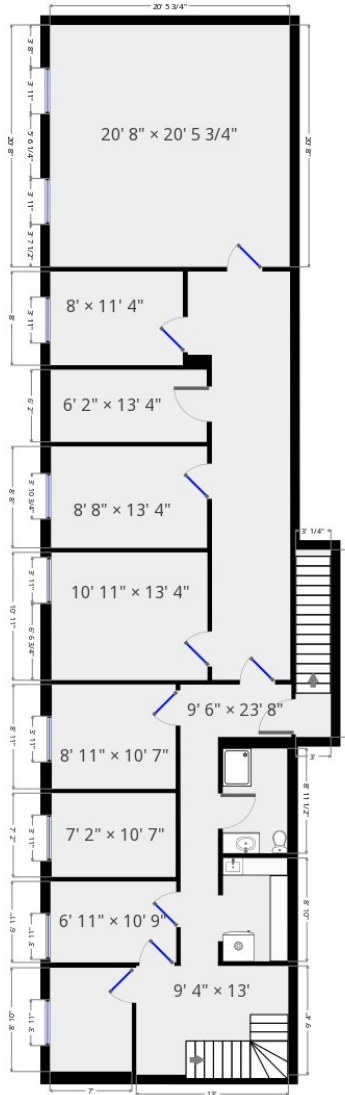
kw COMMERCIAL
ADVISORS®

FOR LEASE

114 CHAIN LAKE DRIVE - BAYERS LAKE BUSINESS PARK | HALIFAX, NS

WAREHOUSE / OFFICE | 10,800 SF

UNITS 1-3 MEZZANINE (+/- 1,800 SF)



BRIAN WOODS, ABR
Real Estate Advisor
902.830.5060
brianwoods@kwcommercial.com

kw COMMERCIAL
ADVISORS®