

FOR LEASE

1 KINGSWOOD DRIVE | HALIFAX, NS

RETAIL | SUITE 101 & SUITE 105

kw COMMERCIAL
ADVISORSSM
A DIVISION OF KELLER WILLIAMS SELECT REALTY



LOCATION OVERVIEW

Kingswood Business Centre is well located in close proximity to a major mixed-use development in the Bedford/Hammonds Plains community. The Centre is located near a number of fast growing residential subdivisions.

PROPERTY FEATURES

- Two building commercial office & retail centre
- Tenant controlled HVAC distribution
- High visibility
- Ample on-site parking
- Excellent exterior signage
- Easy access & egress, drive-thru potential
- High traffic area receives over 17,000 cars/day
- Fast growing residential & commercial area

LEASE RATE: \$20.00 Net PSF

CAM & TAX: \$8.00 PSF



BRIAN WOODS, ABR

Real Estate Advisor
902.830.5060

brianwoods@kwcommercial.com

TOM GERARD, SIOR, CCIM

Real Estate Advisor
902.830.1318

tomgerard@kwcommercial.com

KELLER WILLIAMS SELECT REALTY

6080 Young Street, Suite 308
Halifax, NS B3K 5L2

www.kwcommercialhalifax.com



FOR LEASE

1 KINGSWOOD DRIVE | HALIFAX, NS

RETAIL | SUITE 101 & SUITE 105



BRIAN WOODS, ABR
Real Estate Advisor
902.830.5060
brianwoods@kwcommercial.com

TOM GERARD, SIOR, CCIM
Real Estate Advisor
902.830.1318
tomgerard@kwcommercial.com

kw COMMERCIAL
ADVISORS®



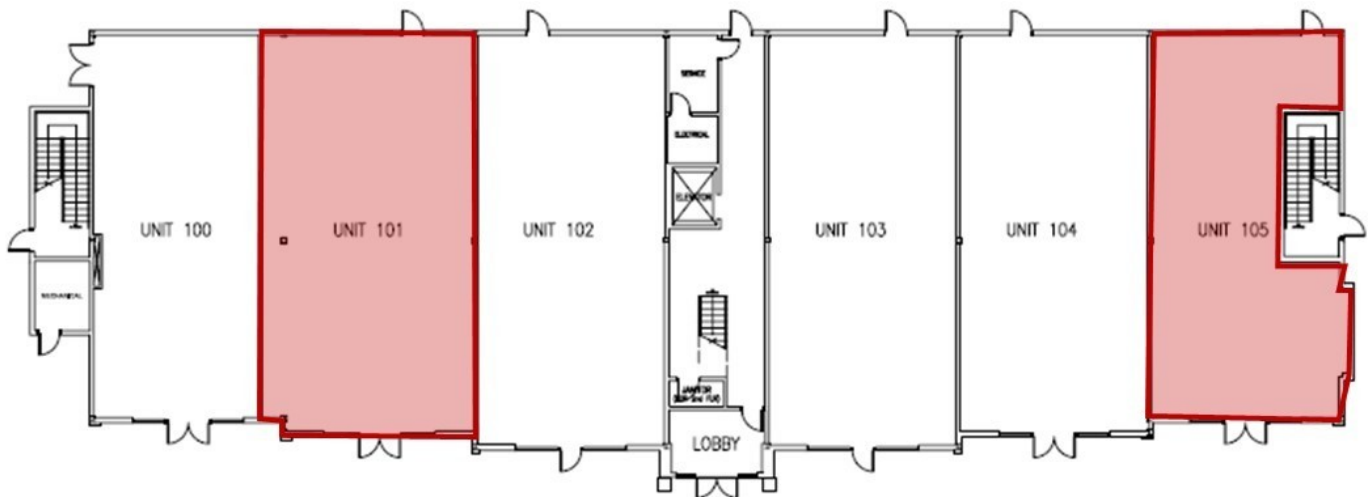
FOR LEASE

1 KINGSWOOD DRIVE | HALIFAX, NS

RETAIL | SUITE 101 & SUITE 105

SUITE 101: 1,805 SF

SUITE 105: 1,361 SF



1 KINGSWOOD BUSINESS CENTRE
Suite 101 & Suite 105

BRIAN WOODS, ABR
Real Estate Advisor
902.830.5060
brianwoods@kwcommercial.com

TOM GERARD, SIOR, CCIM
Real Estate Advisor
902.830.1318
tomgerard@kwcommercial.com

kw COMMERCIAL
ADVISORS®

